

Anti-NDUFC2 Antibody (R1G37)

Summary

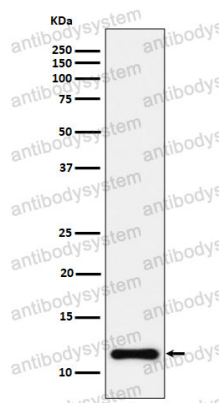
Catalog No.	RHB60702
Clone ID	R1G37
Host species	Rabbit
Tested applications	IHC: 1:100-1:200, WB: 1:1000-1:2000
Species reactivity	Human
Form	Liquid
Storage buffer	0.01M PBS, pH 7.4, 0.05% BSA, 50% Glycerol, 0.05% Sodium azide.
Concentration	1 mg/ml
Purity	>95% by SDS-PAGE.
Clonality	Monoclonal
Isotype	IgG
Applications	IHC, WB
Target	Complex I-B14.5b, NADH-ubiquinone oxidoreductase subunit B14.5b, CI-B14.5b, NDUFC2, NADH dehydrogenase [ubiquinone] 1 subunit C2, HLC-1, Human lung cancer oncogene 1 protein
Purification	Protein A/G purified from cell culture supernatant.
Endotoxin level	Please contact with the lab for this information.
Accession	O95298

Stability and Storage

Use a manual defrost freezer and avoid repeated freeze thaw cycles. Store at 4 °C for frequent use. Store at -20 °C for twelve months from the date of receipt.

Note

For research use only.

Data Image

Western blot

Western blot analysis of NDUFC2 expression in HeLa cell lysate.