

Anti-KAT7 Antibody (R1G33)

Summary

Catalog No.	RHB58801
Clone ID	R1G33
Host species	Rabbit
Tested applications	IF: 1:50-1:200, IHC: 1:50-1:100, IP: 1:20, WB: 1:500-1:1000
Species reactivity	Human
Form	Liquid
Storage buffer	0.01M PBS, pH 7.4, 0.05% BSA, 50% Glycerol, 0.05% Sodium azide.
Concentration	1 mg/ml
Purity	>95% by SDS-PAGE.
Clonality	Monoclonal
Isotype	IgG
Applications	IF, IHC, IP, WB
Target	KAT7, HBOa, HBO1, MYST-2, MYST2, Lysine acetyltransferase 7, MOZ, YBF2/SAS3, SAS2 and TIP60 protein 2, Histone acetyltransferase binding to ORC1, Histone acetyltransferase KAT7
Purification	Protein A/G purified from cell culture supernatant.
Endotoxin level	Please contact with the lab for this information.
Accession	O95251

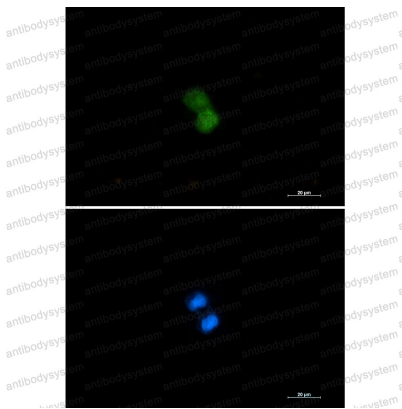
Stability and Storage

Use a manual defrost freezer and avoid repeated freeze thaw cycles. Store at 4 °C for frequent use. Store at -20 °C for twelve months from the date of receipt.

Note

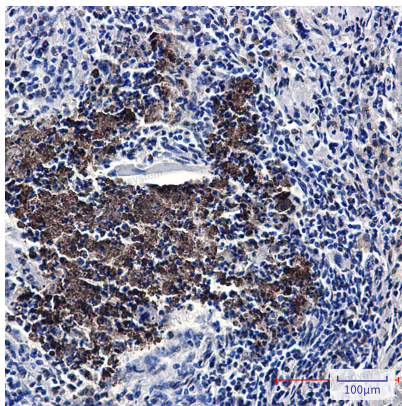
For research use only.

Data Image



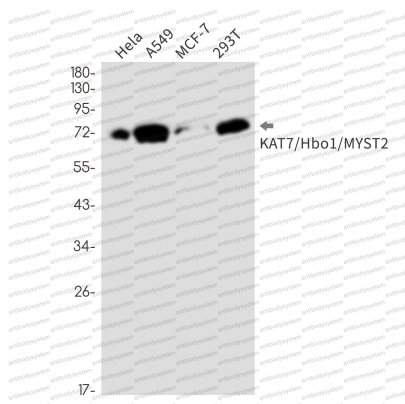
Immunofluorescence

Immunocytochemistry analysis of KAT7 (green) in HCT116 using KAT7 antibody, and DAPI (blue).



Immunohistochemical

Immunohistochemistry analysis of paraffin-embedded Human lung cancer tissue using KAT7/Hbo1/MYST2 antibody. High-pressure and temperature Sodium Citrate pH 6.0 was used for antigen retrieval.



Western blot

Western blot analysis of KAT7/Hbo1/MYST2 in HeLa, A549, MCF-7, 293T lysates using KAT7/Hbo1/MYST2 antibody.