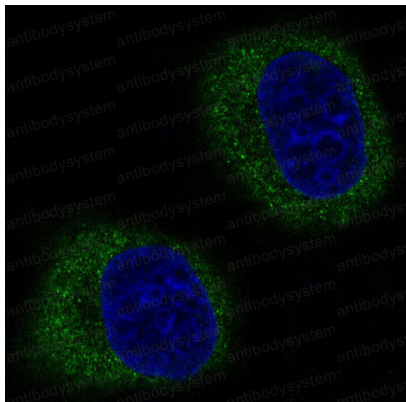


Anti-MFN2 Antibody (R1G22)

Summary

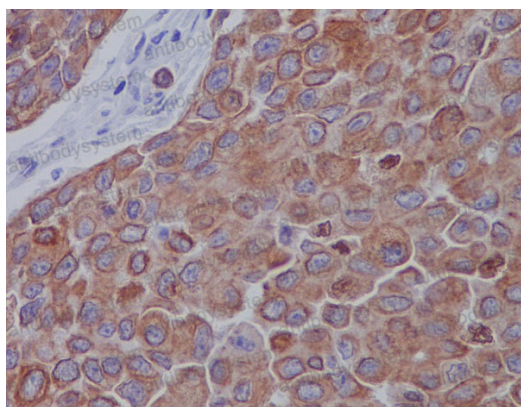
Catalog No.	RHB53703
Clone ID	R1G22
Host species	Rabbit
Tested applications	IF: 1:50-1:200, IHC: 1:100-1:200, WB: 1:1000-1:2000
Species reactivity	Human, Mouse, Rat
Form	Liquid
Storage buffer	0.01M PBS, pH 7.4, 0.05% BSA, 50% Glycerol, 0.05% Sodium azide.
Concentration	1 mg/ml
Purity	>95% by SDS-PAGE.
Clonality	Monoclonal
Isotype	IgG
Applications	IF, IHC, WB
Target	Transmembrane GTPase MFN2, Mitofusin-2, KIAA0214, CPRP1, MFN2
Purification	Protein A/G purified from cell culture supernatant.
Endotoxin level	Please contact with the lab for this information.
Accession	O95140
Stability and Storage	Use a manual defrost freezer and avoid repeated freeze thaw cycles. Store at 4 °C for frequent use. Store at -20 °C for twelve months from the date of receipt.
Note	For research use only.

Data Image



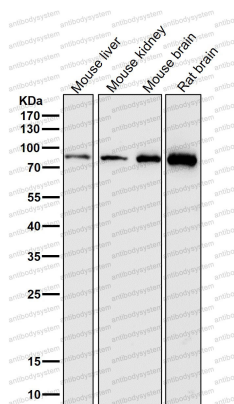
Immunofluorescence

Immunofluorescent analysis of HeLa cells, using Mitofusin 2 Antibody.



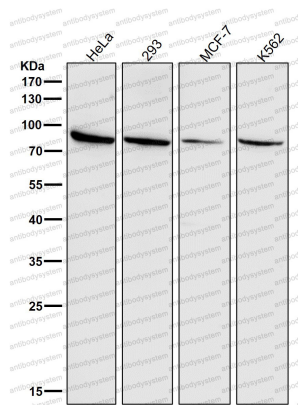
Immunohistochemical

Immunohistochemical analysis of paraffin-embedded human breast carcinoma, using Mitofusin 2 Antibody.



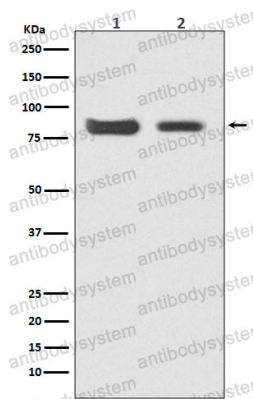
Western blot

All lanes use the Antibody at 1:1K dilution for 1 hour at room temperature.



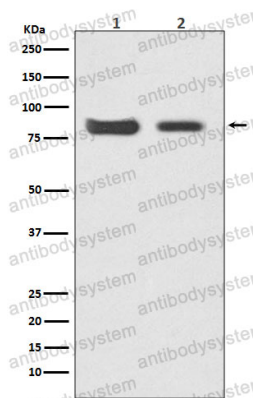
Western blot

All lanes use the Antibody at 1:1K dilution for 1 hour at room temperature.



Western blot

Western blot analysis of Mitofusin 2 expression in (1) HeLa cell lysate; (2) Mouse kidney lysate.



Western blot

Western blot analysis of Mitofusin 2 expression in (1) HeLa cell lysate; (2) Mouse kidney lysate.