

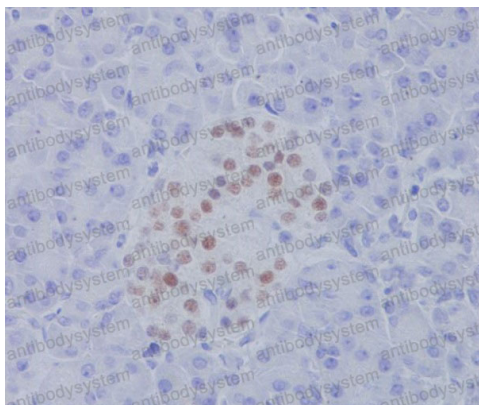
Anti-NKX2-2 Antibody (R1G21)

Summary

Catalog No.	RHB53201
Clone ID	R1G21
Host species	Rabbit
Tested applications	IF: 1:50-1:200, IHC: 1:100-1:200
Species reactivity	Human, Mouse, Rat
Form	Liquid
Storage buffer	0.01M PBS, pH 7.4, 0.05% BSA, 50% Glycerol, 0.05% Sodium azide.
Concentration	1 mg/ml
Purity	>95% by SDS-PAGE.
Clonality	Monoclonal
Isotype	IgG
Applications	IF, IHC
Target	Homeobox protein Nkx-2.2, NKX2-2, Homeobox protein NK-2 homolog B, NKX2B, NKX2.2
Purification	Protein A/G purified from cell culture supernatant.
Endotoxin level	Please contact with the lab for this information.
Accession	O95096
Stability and Storage	Use a manual defrost freezer and avoid repeated freeze thaw cycles. Store at 4 °C for frequent use. Store at -20 °C for twelve months from the date of receipt.

Note For research use only.

Data Image



Immunohistochemical analysis of paraffin-embedded human pancreas, using NKX2.2 Antibody.

Immunohistochemical