

Anti-INMT Antibody (R1G18)

Summary

Catalog No.	RHB52001
Clone ID	R1G18
Host species	Rabbit
Tested applications	WB: 1:500-1:1000
Species reactivity	Human, Mouse, Rat
Form	Liquid
Storage buffer	0.01M PBS, pH 7.4, 0.05% BSA, 50% Glycerol, 0.05% Sodium azide.
Concentration	1 mg/ml
Purity	>95% by SDS-PAGE.
Clonality	Monoclonal
Isotype	IgG
Applications	WB
Target	Amine N-methyltransferase, TEMT, Thioether S-methyltransferase, Indolethylamine N-methyltransferase, Indolamine N-methyltransferase, INMT, Aromatic alkylamine N-methyltransferase, Arylamine N-methyltransferase
Purification	Protein A/G purified from cell culture supernatant.
Endotoxin level	Please contact with the lab for this information.
Accession	O95050

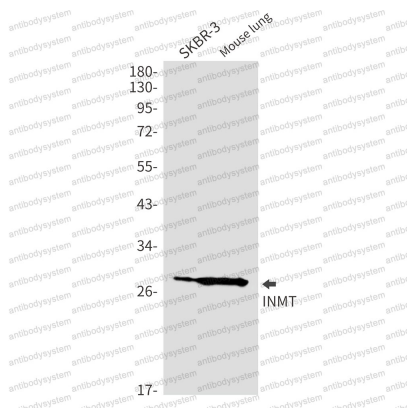
Recombinant Proteins & Antibodies

Stability and Storage

Use a manual defrost freezer and avoid repeated freeze thaw cycles. Store at 4 °C for frequent use. Store at -20 °C for twelve months from the date of receipt.

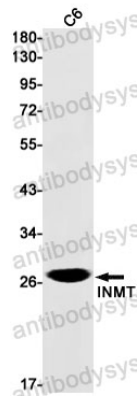
Note

For research use only.

Data Image

Western blot

Western blot analysis of INMT in SKBR3, mouse lung lysates using INMT antibody.



Western blot

Western blot analysis of INMT in C6 lysates using INMT antibody.