

Anti-INMT Antibody (R1G17)

Summary

| | |
|----------------------------|---|
| Catalog No. | RHB52002 |
| Clone ID | R1G17 |
| Host species | Rabbit |
| Tested applications | WB: 1:1000-1:2000 |
| Species reactivity | Human, Mouse, Rat |
| Form | Liquid |
| Storage buffer | 0.01M PBS, pH 7.4, 0.05% BSA, 50% Glycerol, 0.05% Sodium azide. |
| Concentration | 1 mg/ml |
| Purity | >95% by SDS-PAGE. |
| Clonality | Monoclonal |
| Isotype | IgG |
| Applications | WB |
| Target | Amine N-methyltransferase, TEMT, Thioether S-methyltransferase, Indolethylamine N-methyltransferase, Indolamine N-methyltransferase, INMT, Aromatic alkylamine N-methyltransferase, Arylamine N-methyltransferase |
| Purification | Protein A/G purified from cell culture supernatant. |
| Endotoxin level | Please contact with the lab for this information. |
| Accession | O95050 |

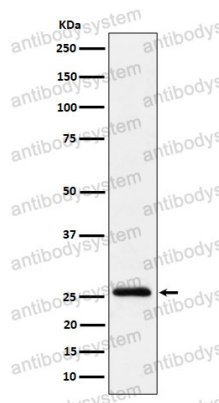
Stability and Storage

Use a manual defrost freezer and avoid repeated freeze thaw cycles. Store at 4 °C for frequent use. Store at -20 °C for twelve months from the date of receipt.

Note

For research use only.

Data Image



Western blot

Western blot analysis of TEMT expression in A549 cell lysate.