

Anti-INMT Antibody (R1G16)

Summary

Catalog No.	RHB52003
Clone ID	R1G16
Host species	Rabbit
Tested applications	WB: 1:1000-1:2000
Species reactivity	Human, Mouse, Rat
Form	Liquid
Storage buffer	0.01M PBS, pH 7.4, 0.05% BSA, 50% Glycerol, 0.05% Sodium azide.
Concentration	1 mg/ml
Purity	>95% by SDS-PAGE.
Clonality	Monoclonal
Isotype	IgG
Applications	WB
Target	Amine N-methyltransferase, TEMT, Thioether S-methyltransferase, Indolethylamine N-methyltransferase, Indolamine N-methyltransferase, INMT, Aromatic alkylamine N-methyltransferase, Arylamine N-methyltransferase
Purification	Protein A/G purified from cell culture supernatant.
Endotoxin level	Please contact with the lab for this information.
Accession	O95050

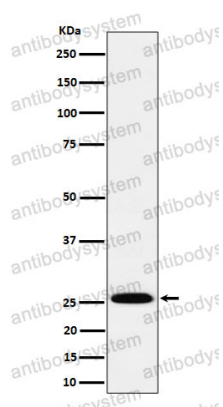
Stability and Storage

Use a manual defrost freezer and avoid repeated freeze thaw cycles. Store at 4 °C for frequent use. Store at -20 °C for twelve months from the date of receipt.

Note

For research use only.

Data Image



Western blot

Western blot analysis of TEMT expression in A549 cell lysate.