

Anti-CLSTN1 Antibody (R1G14)

Summary

Catalog No.	RHB50601
Clone ID	R1G14
Host species	Rabbit
Tested applications	IF: 1:50-1:200, IHC: 1:50-1:100, WB: 1:500-1:1000
Species reactivity	Human, Mouse, Hamster
Form	Liquid
Storage buffer	0.01M PBS, pH 7.4, 0.05% BSA, 50% Glycerol, 0.05% Sodium azide.
Concentration	1 mg/ml
Purity	>95% by SDS-PAGE.
Clonality	Monoclonal
Isotype	IgG
Applications	IF, IHC, WB
Target	KIAA0911, Alcadin- α , CLSTN1, Alzheimer-related cadherin-like protein, Calsyntenin-1, C-terminal fragment 1- α , Non-classical cadherin XB31 α , Alc- α , SAlc- α , CS1
Purification	Protein A/G purified from cell culture supernatant.
Endotoxin level	Please contact with the lab for this information.
Accession	O94985

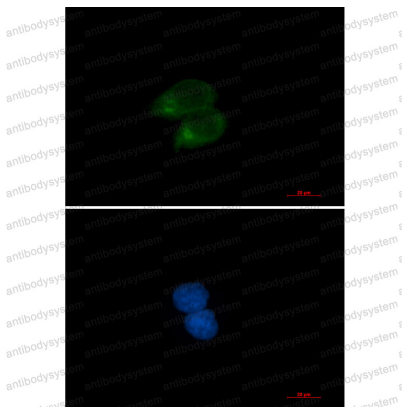
Stability and Storage

Use a manual defrost freezer and avoid repeated freeze thaw cycles. Store at 4 °C for frequent use. Store at -20 °C for twelve months from the date of receipt.

Note

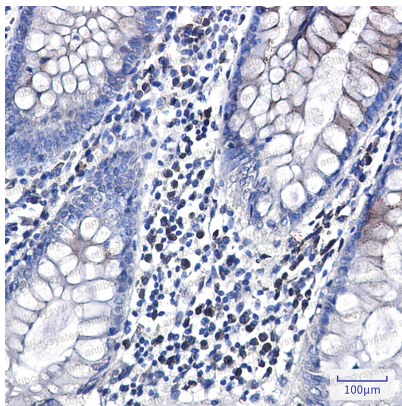
For research use only.

Data Image



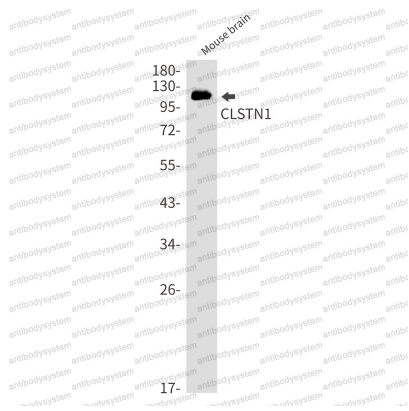
Immunofluorescence

Immunocytochemistry analysis of CLSTN1 (green) in Hela using CLSTN1 antibody, and DAPI (blue).



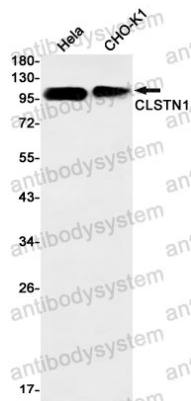
Immunohistochemical

Immunohistochemistry analysis of paraffin-embedded Human colon cancer using CLSTN1 antibody. High-pressure and temperature Sodium Citrate pH 6.0 was used for antigen retrieval.



Western blot

Western blot analysis of CLSTN1 in mouse brain lysates using CLSTN1 antibody.



Western blot

Western blot analysis of CLSTN1 in HeLa, CHO-K1 lysates using CLSTN1 antibody