

Anti-KDM4B Antibody (R1G12)

Summary

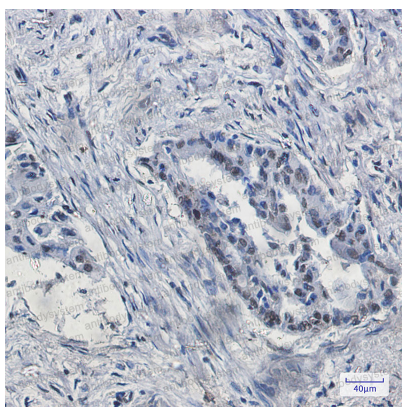
Catalog No.	RHB49604
Clone ID	R1G12
Host species	Rabbit
Tested applications	IF: 1:50-1:200, IHC: 1:50-1:100, WB: 1:500-1:1000
Species reactivity	Human
Form	Liquid
Storage buffer	0.01M PBS, pH 7.4, 0.05% BSA, 50% Glycerol, 0.05% Sodium azide.
Concentration	1 mg/ml
Purity	>95% by SDS-PAGE.
Clonality	Monoclonal
Isotype	IgG
Applications	IF, IHC, WB
Target	Jumonji domain-containing protein 2B, KDM4B, JmjC domain-containing histone demethylation protein 3B, JHDM3B, JMJD2B, Lysine-specific demethylase 4B, [histone H3]-trimethyl-L-lysine(9) demethylase 4B, KIAA0876
Purification	Protein A/G purified from cell culture supernatant.
Endotoxin level	Please contact with the lab for this information.
Accession	O94953

Stability and Storage

Use a manual defrost freezer and avoid repeated freeze thaw cycles. Store at 4 °C for frequent use. Store at -20 °C for twelve months from the date of receipt.

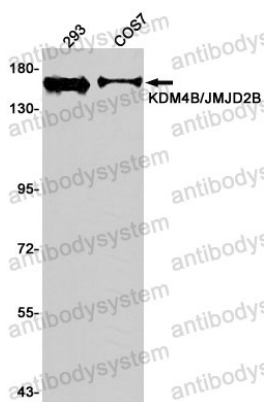
Note

For research use only.

Data Image

Immunohistochemical

Immunohistochemistry analysis of paraffin-embedded Human lung cancer using KDM4B/JMJD2B antibody. High-pressure and temperature Sodium Citrate pH 6.0 was used for antigen retrieval.



Western blot

Western blot analysis of KDM4B in 293, COS7 lysates using KDM4B antibody.