

Anti-SUN1 Antibody (R1G08)

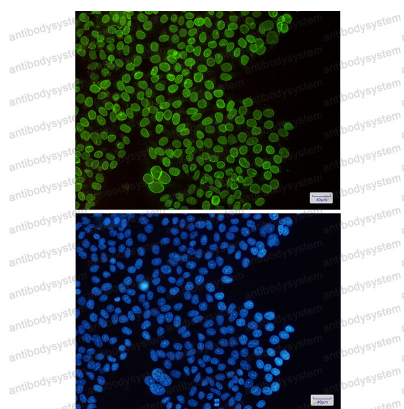
Summary

Catalog No.	RHB47701
Clone ID	R1G08
Host species	Rabbit
Tested applications	IF: 1:50-1:200, IHC: 1:50-1:100, WB: 1:500-1:1000
Species reactivity	Human
Form	Liquid
Storage buffer	0.01M PBS, pH 7.4, 0.05% BSA, 50% Glycerol, 0.05% Sodium azide.
Concentration	1 mg/ml
Purity	>95% by SDS-PAGE.
Clonality	Monoclonal
Isotype	IgG
Applications	IF, IHC, WB
Target	UNC84A, KIAA0810, Sad1/unc-84 protein-like 1, Protein unc-84 homolog A, SUN1, SUN domain-containing protein 1
Purification	Protein A/G purified from cell culture supernatant.
Endotoxin level	Please contact with the lab for this information.
Accession	O94901
Stability and Storage	Use a manual defrost freezer and avoid repeated freeze thaw cycles. Store at 4 °C for frequent use. Store at -20 °C for twelve months from the date of receipt.

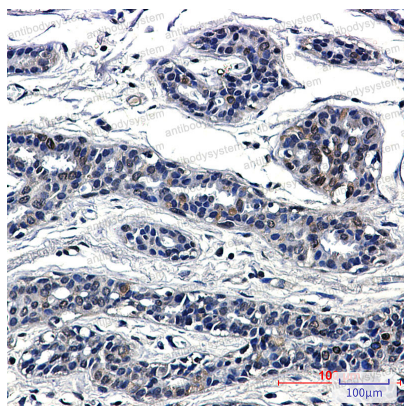
Note

For research use only.

Data Image

**Immunofluorescence**

Immunocytochemistry analysis of SUN1(green) in Hela using SUN1 antibody, and DAPI(blue)

**Immunohistochemical**

Immunohistochemistry analysis of paraffin-embedded Human breast cancer using SUN1 antibody. High-pressure and temperature Sodium Citrate pH 6.0 was used for antigen retrieval.



Western blot

Western blot analysis of SUN1 in K562, HeLa lysates using SUN1 antibody.