

Anti-SEC24D Antibody (R1G05)

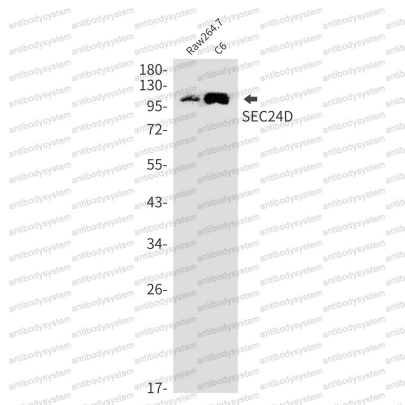
Summary

Catalog No.	RHB46101
Clone ID	R1G05
Host species	Rabbit
Tested applications	WB: 1:500-1:1000
Species reactivity	Human, Mouse, Rat
Form	Liquid
Storage buffer	0.01M PBS, pH 7.4, 0.05% BSA, 50% Glycerol, 0.05% Sodium azide.
Concentration	1 mg/ml
Purity	>95% by SDS-PAGE.
Clonality	Monoclonal
Isotype	IgG
Applications	WB
Target	KIAA0755, SEC24D, SEC24-related protein D, Protein transport protein Sec24D
Purification	Protein A/G purified from cell culture supernatant.
Endotoxin level	Please contact with the lab for this information.
Accession	O94855
Stability and Storage	Use a manual defrost freezer and avoid repeated freeze thaw cycles. Store at 4 °C for frequent use. Store at -20 °C for twelve months from the date of receipt.

Note

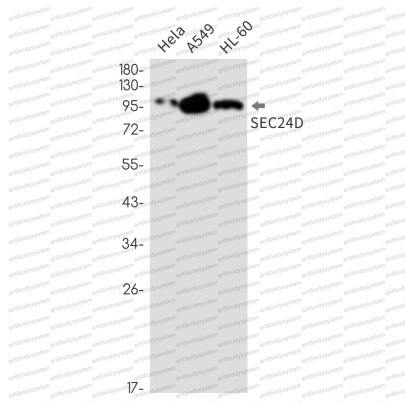
For research use only.

Data Image



Western blot

Western blot analysis of SEC24D in Raw264.7, C6 lysates using SEC24D antibody.



Western blot

Western blot analysis of SEC24D in HeLa, A549, HL-60 lysates using SEC24D antibody.