

Anti-ATG12 Antibody (R1G03)

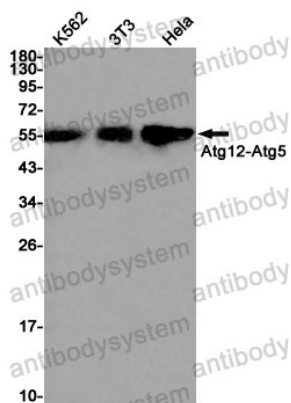
Summary

Catalog No.	RHB44601
Clone ID	R1G03
Host species	Rabbit
Tested applications	WB: 1:500-1:1000
Species reactivity	Human, Mouse
Form	Liquid
Storage buffer	0.01M PBS, pH 7.4, 0.05% BSA, 50% Glycerol, 0.05% Sodium azide.
Concentration	1 mg/ml
Purity	>95% by SDS-PAGE.
Clonality	Monoclonal
Isotype	IgG
Applications	WB
Target	Autophagy-related protein 12, APG12-like, Ubiquitin-like protein ATG12, APG12L, APG12, ATG12
Purification	Protein A/G purified from cell culture supernatant.
Endotoxin level	Please contact with the lab for this information.
Accession	O94817
Stability and Storage	Use a manual defrost freezer and avoid repeated freeze thaw cycles. Store at 4 °C for frequent use. Store at -20 °C for twelve months from the date of receipt.

Note

For research use only.

Data Image



Western blot

Western blot analysis of Apg12 in K562, 3T3, HeLa lysates using ATG12 antibody.