

# Anti-DDAH1 Antibody (R1F92)

## Summary

---

|                            |  |
|----------------------------|--|
| <b>Catalog No.</b>         | RHB42402   |
| <b>Clone ID</b>            | R1F92  |
| <b>Host species</b>        | Rabbit   |
| <b>Tested applications</b> | FCM: 1:20-1:100, IF: 1:50-1:200, IHC: 1:100-1:200, IP: 1:20-1:50, WB: 1:1000-1:2000  |
| <b>Species reactivity</b>  | Human, Mouse, Rat  |
| <b>Form</b>                | Liquid   |
| <b>Storage buffer</b>      | 0.01M PBS, pH 7.4, 0.05% BSA, 50% Glycerol, 0.05% Sodium azide.  |
| <b>Concentration</b>       | 1 mg/ml  |
| <b>Purity</b>              | >95% by SDS-PAGE.  |
| <b>Clonality</b>           | Monoclonal   |
| <b>Isotype</b>             | IgG  |
| <b>Applications</b>        | FCM, IF, IHC, IP, WB   |
| <b>Target</b>              | DDAH, DDAH-1, N(G),N(G)-dimethylarginine dimethylaminohydrolase 1, Dimethylarginine dimethylaminohydrolase 1, DDAH1, Dimethylargininase-1, DDAH1 |
| <b>Purification</b>        | Protein A/G purified from cell culture supernatant.  |
| <b>Endotoxin level</b>     | Please contact with the lab for this information.  |
| <b>Accession</b>           | O94760   |

**Stability and Storage**

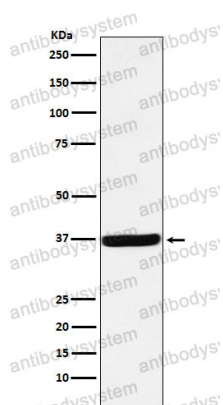
Use a manual defrost freezer and avoid repeated freeze thaw cycles. Store at 4 °C for frequent use. Store at -20 °C for twelve months from the date of receipt.

**Note**

For research use only.

**Data Image**

---



Western blot

Western blot analysis of DDAH1 expression in 293 cell lysate.