

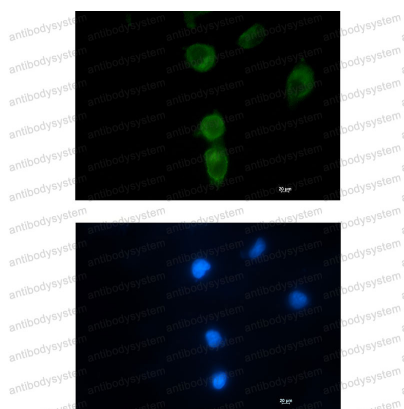
Anti-CLPX Antibody (R1F88)

Summary

Catalog No.	RHB39401
Clone ID	R1F88
Host species	Rabbit
Tested applications	IF: 1:50-1:200, WB: 1:500-1:1000
Species reactivity	Human, Mouse, Rat, Hamster
Form	Liquid
Storage buffer	0.01M PBS, pH 7.4, 0.05% BSA, 50% Glycerol, 0.05% Sodium azide.
Concentration	1 mg/ml
Purity	>95% by SDS-PAGE.
Clonality	Monoclonal
Isotype	IgG
Applications	IF, WB
Target	ATP-dependent Clp protease ATP-binding subunit clpX-like, mitochondrial, CLPX
Purification	Protein A/G purified from cell culture supernatant.
Endotoxin level	Please contact with the lab for this information.
Accession	O76031
Stability and Storage	Use a manual defrost freezer and avoid repeated freeze thaw cycles. Store at 4 °C for frequent use. Store at -20 °C for twelve months from the date of receipt.

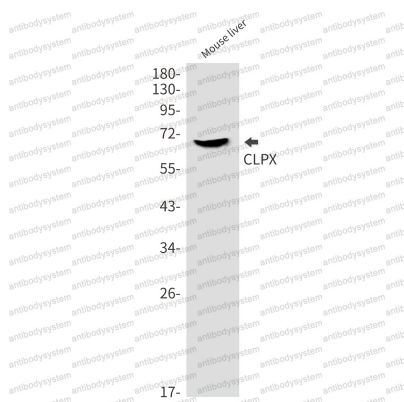
Note For research use only.

Data Image



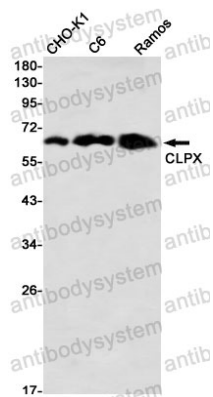
Immunofluorescence

Immunocytochemistry analysis of CLPX (green) in HT-1080 using CLPX antibody, and DAPI (blue).



Western blot

Western blot analysis of CLPX in mouse liver lysates using CLPX antibody.



Western blot

Western blot analysis of CLPX in CHO-K1, C6, Ramos lysates using CLPX antibody