

Anti-Phospho-RAD17 (Ser656) Antibody (R1F85)

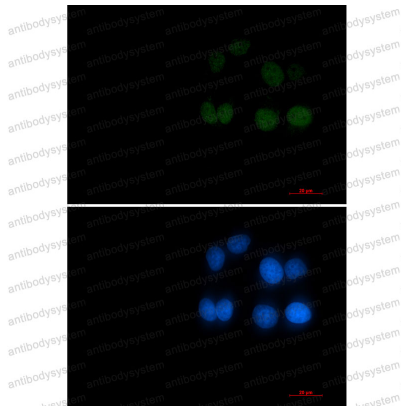
Summary

Catalog No.	RHB36501
Clone ID	R1F85
Host species	Rabbit
Tested applications	IF: 1:50-1:200, IHC: 1:50-1:100, WB: 1:500-1:1000
Species reactivity	Human
Form	Liquid
Storage buffer	0.01M PBS, pH 7.4, 0.05% BSA, 50% Glycerol, 0.05% Sodium azide.
Concentration	1 mg/ml
Purity	>95% by SDS-PAGE.
Clonality	Monoclonal
Isotype	IgG
Applications	IF, IHC, WB
Target	Cell cycle checkpoint protein RAD17, RF-C/activator 1 homolog, R24L, hRad17, RAD17
Purification	Protein A/G purified from cell culture supernatant.
Endotoxin level	Please contact with the lab for this information.
Accession	O75943
Stability and Storage	Use a manual defrost freezer and avoid repeated freeze thaw cycles. Store at 4 °C for frequent use. Store at -20 °C for twelve months from the date of receipt.

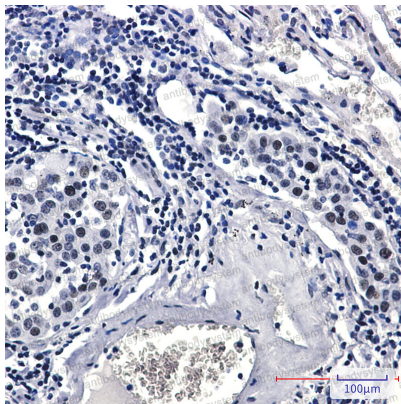
Note

For research use only.

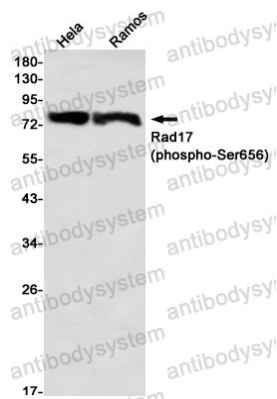
Data Image

**Immunofluorescence**

Immunocytochemistry analysis of Phospho-Rad17 (Ser656) (green) in HeLa using Phospho-Rad17 (Ser656) antibody, and DAPI (blue).

**Immunohistochemical**

Immunohistochemistry analysis of paraffin-embedded Human lung cancer tissue using Rad17 (Phospho-Ser656) antibody. High-pressure and temperature Sodium Citrate pH 6.0 was used for antigen retrieval.



Western blot

Western blot analysis of Rad17 (Phospho-Ser656) in HeLa, Ramos lysates using Rad17 (Phospho-Ser656) antibody.