

Anti-GABBR2 Antibody (R1F73)

Summary

| | |
|----------------------------|---|
| Catalog No. | RHB34503 |
| Clone ID | R1F73 |
| Host species | Rabbit |
| Tested applications | FCM: 1:20-1:100, IF: 1:50-1:200, IHC: 1:100-1:200, WB: 1:1000-1:2000 |
| Species reactivity | Human, Mouse, Rat |
| Form | Liquid |
| Storage buffer | 0.01M PBS, pH 7.4, 0.05% BSA, 50% Glycerol, 0.05% Sodium azide. |
| Concentration | 1 mg/ml |
| Purity | >95% by SDS-PAGE. |
| Clonality | Monoclonal |
| Isotype | IgG |
| Applications | FCM, IF, IHC, WB |
| Target | Gb2, GPRC3B, HG20, G-protein coupled receptor 51, GABBR2, Gamma-aminobutyric acid type B receptor subunit 2, GABA-B receptor 2, GPR51, GABA-B-R2, GABA-BR2, GABABR2 |
| Purification | Protein A/G purified from cell culture supernatant. |
| Endotoxin level | Please contact with the lab for this information. |
| Accession | O75899 |

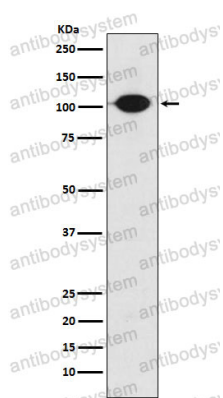
Stability and Storage

Use a manual defrost freezer and avoid repeated freeze thaw cycles. Store at 4 °C for frequent use. Store at -20 °C for twelve months from the date of receipt.

Note

For research use only.

Data Image



Western blot

Western blot analysis of GABA B Receptor 2 expression in SH-SY5Y cell lysate.