

Anti-CBR3 Antibody (R1F70)

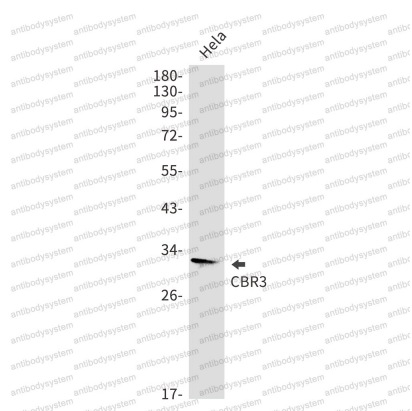
Summary

| | |
|------------------------------|---|
| Catalog No. | RHB32101 |
| Clone ID | R1F70 |
| Host species | Rabbit |
| Tested applications | WB: 1:500-1:1000 |
| Species reactivity | Human |
| Form | Liquid |
| Storage buffer | 0.01M PBS, pH 7.4, 0.05% BSA, 50% Glycerol, 0.05% Sodium azide. |
| Concentration | 1 mg/ml |
| Purity | >95% by SDS-PAGE. |
| Clonality | Monoclonal |
| Isotype | IgG |
| Applications | WB |
| Target | Carbonyl reductase [NADPH] 3, Short chain dehydrogenase/reductase family 21C member 2, NADPH-dependent carbonyl reductase 3, CBR3 |
| Purification | Protein A/G purified from cell culture supernatant. |
| Endotoxin level | Please contact with the lab for this information. |
| Accession | O75828 |
| Stability and Storage | Use a manual defrost freezer and avoid repeated freeze thaw cycles. Store at 4 °C for frequent use. Store at -20 °C for twelve months from the date of receipt. |

Note

For research use only.

Data Image



Western blot

Western blot analysis of CBR3 in Hela lysates using CBR3 antibody.