

Anti-CDC123 Antibody (R1F69)

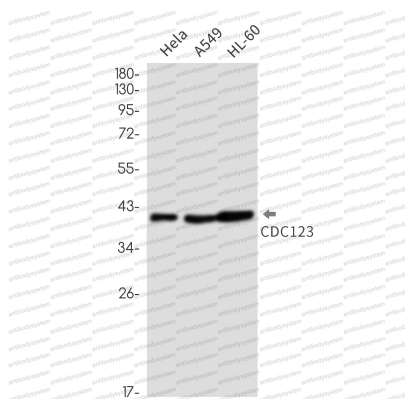
Summary

Catalog No.	RHB31001
Clone ID	R1F69
Host species	Rabbit
Tested applications	IP: 1:20, WB: 1:500-1:1000
Species reactivity	Human
Form	Liquid
Storage buffer	0.01M PBS, pH 7.4, 0.05% BSA, 50% Glycerol, 0.05% Sodium azide.
Concentration	1 mg/ml
Purity	>95% by SDS-PAGE.
Clonality	Monoclonal
Isotype	IgG
Applications	IP, WB
Target	Protein D123, D123, Cell division cycle protein 123 homolog, HT-1080, C10orf7, PZ32, CDC123
Purification	Protein A/G purified from cell culture supernatant.
Endotoxin level	Please contact with the lab for this information.
Accession	O75794
Stability and Storage	Use a manual defrost freezer and avoid repeated freeze thaw cycles. Store at 4 °C for frequent use. Store at -20 °C for twelve months from the date of receipt.

Note

For research use only.

Data Image



Western blot

Western blot analysis of CDC123 in HeLa, A549, HL-60 lysates using CDC123 antibody.