

Anti-Phospho-RPS6KA5/MSK1 (Ser376) Antibody (R1F58)

Summary

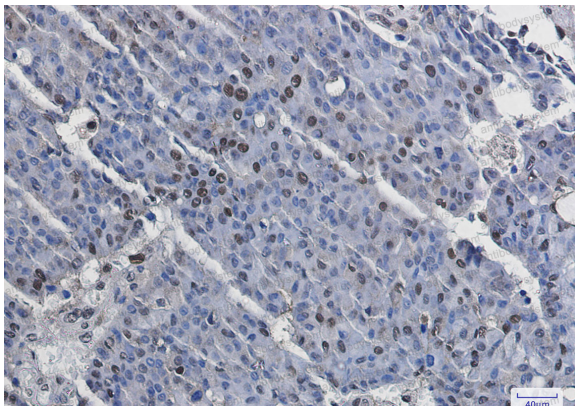
Catalog No.	RHB25401
Clone ID	R1F58
Host species	Rabbit
Tested applications	IHC: 1:50-1:100, IP: 1:20, WB: 1:500-1:1000
Species reactivity	Human, Rat
Form	Liquid
Storage buffer	0.01M PBS, pH 7.4, 0.05% BSA, 50% Glycerol, 0.05% Sodium azide.
Concentration	1 mg/ml
Purity	>95% by SDS-PAGE.
Clonality	Monoclonal
Isotype	IgG
Applications	IHC, IP, WB
Target	RPS6KA5, RSK-like protein kinase, MSK1, Ribosomal protein S6 kinase alpha-5, Nuclear mitogen- and stress-activated protein kinase 1, 90 kDa ribosomal protein S6 kinase 5, RSKL, S6K-alpha-5
Purification	Protein A/G purified from cell culture supernatant.
Endotoxin level	Please contact with the lab for this information.
Accession	O75582

Stability and Storage

Use a manual defrost freezer and avoid repeated freeze thaw cycles. Store at 4 °C for frequent use. Store at -20 °C for twelve months from the date of receipt.

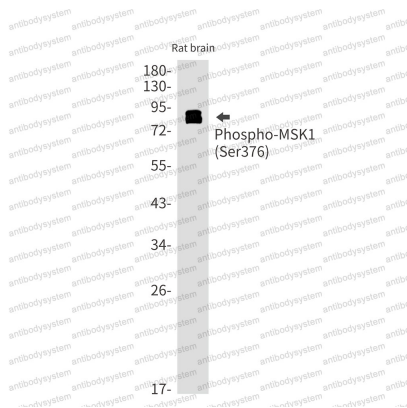
Note

For research use only.

Data Image

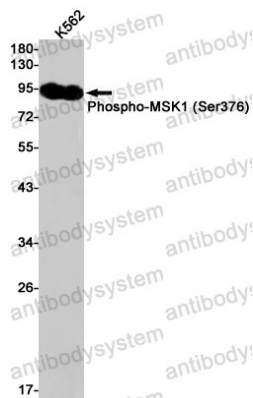
Immunohistochemical

Immunohistochemistry analysis of paraffin-embedded Human breast cancer using MSK1 (Phospho-Ser376) antibody. High-pressure and temperature Sodium Citrate pH 6.0 was used for antigen retrieval.



Western blot

Western blot analysis of Phospho-MSK1 (Ser376) in rat brain lysates using Phospho-MSK1 (Ser376) antibody.



Western blot

Western blot analysis of Phospho-MSK1 (Ser376) in K562 lysates using Phospho-MSK1 (Ser376) antibody.