

Anti-Phospho-RPS6KA5/MSK1 (Ser360) Antibody (R1F57)

Summary

Catalog No.	RHB25402
Clone ID	R1F57
Host species	Rabbit
Tested applications	IF: 1:50-1:200, IP: 1:20, WB: 1:500-1:1000
Species reactivity	Human, Mouse, Rat, Hamster
Form	Liquid
Storage buffer	0.01M PBS, pH 7.4, 0.05% BSA, 50% Glycerol, 0.05% Sodium azide.
Concentration	1 mg/ml
Purity	>95% by SDS-PAGE.
Clonality	Monoclonal
Isotype	IgG
Applications	IF, IP, WB
Target	RPS6KA5, RSK-like protein kinase, MSK1, Ribosomal protein S6 kinase alpha-5, Nuclear mitogen- and stress-activated protein kinase 1, 90 kDa ribosomal protein S6 kinase 5, RSKL, S6K-alpha-5
Purification	Protein A/G purified from cell culture supernatant.
Endotoxin level	Please contact with the lab for this information.
Accession	O75582

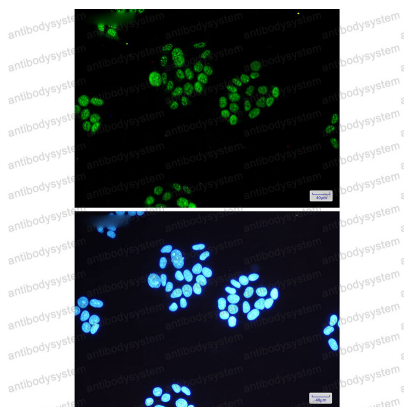
Recombinant Proteins & Antibodies

Stability and Storage

Use a manual defrost freezer and avoid repeated freeze thaw cycles. Store at 4 °C for frequent use. Store at -20 °C for twelve months from the date of receipt.

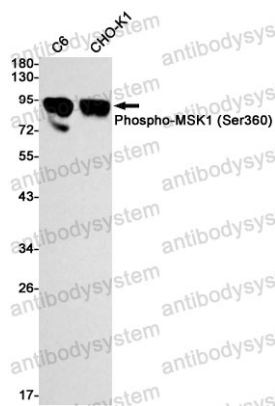
Note

For research use only.

Data Image

Immunofluorescence

Immunocytochemistry analysis of MSK1 (Phospho-S360)(green) in Hela using MSK1 (Phospho-S360) antibody, and DAPI(blue)



Western blot

Western blot analysis of Phospho-MSK1 (Ser360) in C6, CHO-K1 lysates using Phospho-MSK1 (Ser360) antibody.