

Anti-CRCP Antibody (R1F55)

Summary

Catalog No.	RHB25101
Clone ID	R1F55
Host species	Rabbit
Tested applications	IF: 1:50-1:200, IHC: 1:50-1:100, IP: 1:20, WB: 1:500-1:1000
Species reactivity	Human, Mouse, Rat
Form	Liquid
Storage buffer	0.01M PBS, pH 7.4, 0.05% BSA, 50% Glycerol, 0.05% Sodium azide.
Concentration	1 mg/ml
Purity	>95% by SDS-PAGE.
Clonality	Monoclonal
Isotype	IgG
Applications	IF, IHC, IP, WB
Target	CGRPRCP, HsC17, Calcitonin gene-related peptide-receptor component protein, CGRP-RCP, CRCP, RNA polymerase III subunit C9, DNA-directed RNA polymerase III subunit RPC9, CGRP-receptor component protein
Purification	Protein A/G purified from cell culture supernatant.
Endotoxin level	Please contact with the lab for this information.
Accession	O75575

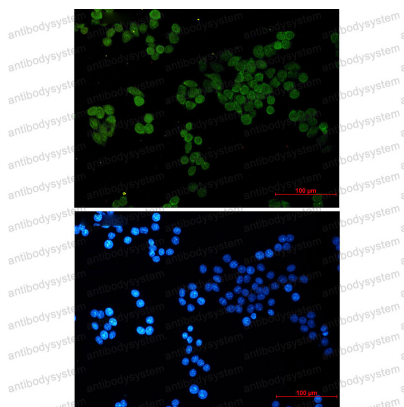
Stability and Storage

Use a manual defrost freezer and avoid repeated freeze thaw cycles. Store at 4 °C for frequent use. Store at -20 °C for twelve months from the date of receipt.

Note

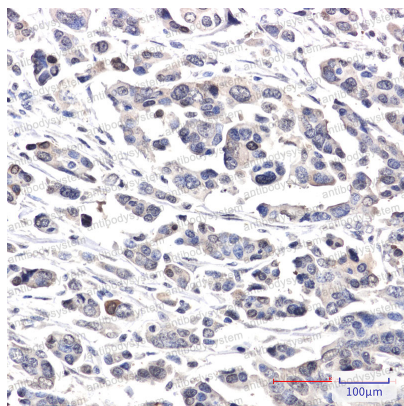
For research use only.

Data Image



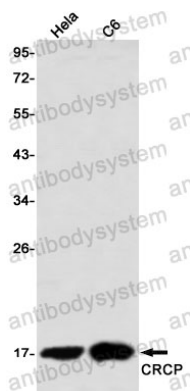
Immunofluorescence

Immunocytochemistry analysis of CRCP (green) in Hela using CRCP antibody, and DAPI (blue).



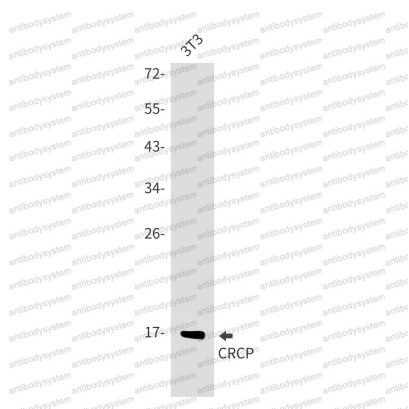
Immunohistochemical

Immunohistochemistry analysis of paraffin-embedded Human Cholangiocarcinoma using CRCP antibody. High-pressure and temperature Sodium Citrate pH 6.0 was used for antigen retrieval.



Western blot

Western blot analysis of CRCP in HeLa, C6 lysates using CRCP antibody



Western blot

Western blot analysis of CRCP in 3T3 lysates using CRCP antibody.