

# Anti-RBML2 Antibody (R1F42)

## Summary

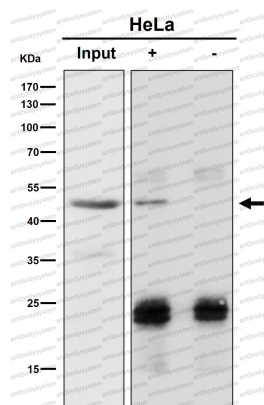
---

<b>Catalog No.</b>	RHB23502
<b>Clone ID</b>	R1F42
<b>Host species</b>	Rabbit
<b>Tested applications</b>	IF: 1:50-1:200, IP: 1:20-1:50, WB: 1:1000-1:2000
<b>Species reactivity</b>	Human, Mouse, Rat
<b>Form</b>	Liquid
<b>Storage buffer</b>	0.01M PBS, pH 7.4, 0.05% BSA, 50% Glycerol, 0.05% Sodium azide.
<b>Concentration</b>	1 mg/ml
<b>Purity</b>	>95% by SDS-PAGE.
<b>Clonality</b>	Monoclonal
<b>Isotype</b>	IgG
<b>Applications</b>	IF, IP, WB
<b>Target</b>	HNRNPGT, RBML2, hnRNP G-T, Testis-specific heterogeneous nuclear ribonucleoprotein G-T, RNA-binding motif protein, X-linked-like-2
<b>Purification</b>	Protein A/G purified from cell culture supernatant.
<b>Endotoxin level</b>	Please contact with the lab for this information.
<b>Accession</b>	O75526
<b>Stability and Storage</b>	Use a manual defrost freezer and avoid repeated freeze thaw cycles. Store at 4 °C for frequent use. Store at -20 °C for twelve months from the date of receipt.

**Note**

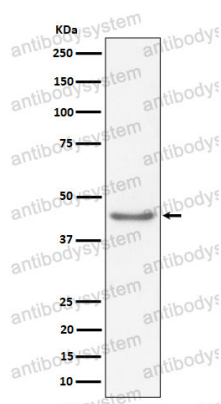
For research use only.

## Data Image



Immunoprecipitation

Immunoprecipitate (IP) analysis using the Antibody at 1:50 dilution. (wb at 1:1K dilution)



Western blot

Western blot analysis of RBMXL2 expression in HeLa cell lysate.