

Anti-Phospho-IRE1 (Ser724) Antibody (R1F37)

Summary

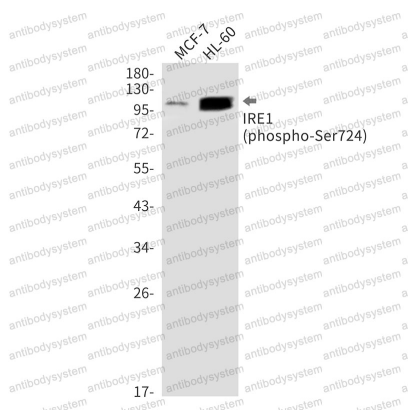
Catalog No.	RHB21301
Clone ID	R1F37
Host species	Rabbit
Tested applications	IP: 1:20, WB: 1:500-1:1000
Species reactivity	Human
Form	Liquid
Storage buffer	0.01M PBS, pH 7.4, 0.05% BSA, 50% Glycerol, 0.05% Sodium azide.
Concentration	1 mg/ml
Purity	>95% by SDS-PAGE.
Clonality	Monoclonal
Isotype	IgG
Applications	IP, WB
Target	Endoplasmic reticulum-to-nucleus signaling 1, IRE1a, ERN1, Ire1-alpha, hIRE1p, Serine/threonine-protein kinase/endoribonuclease IRE1, Inositol-requiring protein 1, IRE1
Purification	Protein A/G purified from cell culture supernatant.
Endotoxin level	Please contact with the lab for this information.
Accession	O75460

Stability and Storage

Use a manual defrost freezer and avoid repeated freeze thaw cycles. Store at 4 °C for frequent use. Store at -20 °C for twelve months from the date of receipt.

Note

For research use only.

Data Image

Western blot

Western blot analysis of Phospho-IRE1 (Ser724) in MCF-7, HL-60 lysates using Phospho-IRE1 (Ser724) antibody.