

# Anti-MAF Antibody (R1F33)

## Summary

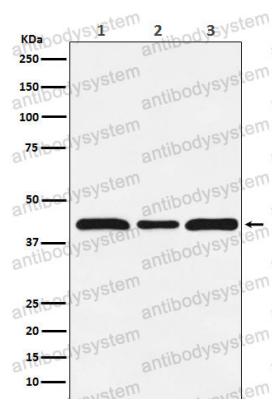
---

|                              |   |
|------------------------------|---|
| <b>Catalog No.</b>           | RHB20603  |
| <b>Clone ID</b>              | R1F33   |
| <b>Host species</b>          | Rabbit  |
| <b>Tested applications</b>   | WB: 1:1000-1:2000   |
| <b>Species reactivity</b>    | Human, Mouse, Rat   |
| <b>Form</b>                  | Liquid  |
| <b>Storage buffer</b>        | 0.01M PBS, pH 7.4, 0.05% BSA, 50% Glycerol, 0.05% Sodium azide.   |
| <b>Concentration</b>         | 1 mg/ml   |
| <b>Purity</b>                | >95% by SDS-PAGE.   |
| <b>Clonality</b>             | Monoclonal  |
| <b>Isotype</b>               | IgG   |
| <b>Applications</b>          | WB  |
| <b>Target</b>                | MAF, Transcription factor Maf, V-maf musculoaponeurotic fibrosarcoma oncogene homolog, Proto-oncogene c-Maf   |
| <b>Purification</b>          | Protein A/G purified from cell culture supernatant.   |
| <b>Endotoxin level</b>       | Please contact with the lab for this information.   |
| <b>Accession</b>             | O75444  |
| <b>Stability and Storage</b> | Use a manual defrost freezer and avoid repeated freeze thaw cycles. Store at 4 °C for frequent use. Store at -20 °C for twelve months from the date of receipt. |

**Note**

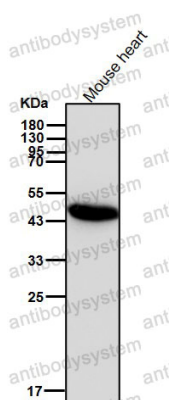
For research use only.

## Data Image



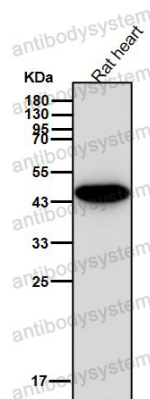
Western blot

Western blot analysis of c-Maf expression in (1) HUVEC cell lysate; (2) NIH/3T3 cell lysate; (3) PC12 cell lysate.



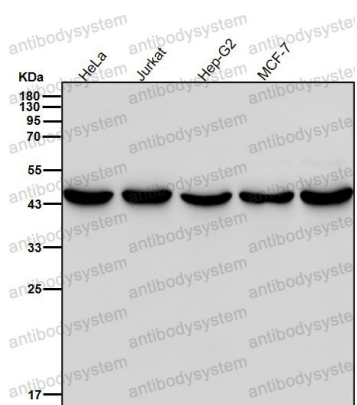
Western blot

All lanes use the Antibody at 1:2K dilution for 1 hour at room temperature.



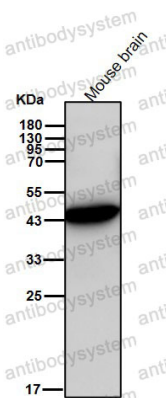
Western blot

All lanes use the Antibody at 1:2K dilution for 1 hour at room temperature.



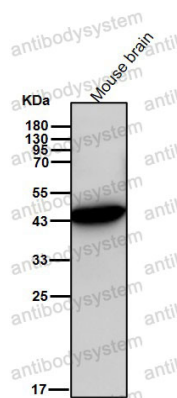
Western blot

All lanes use the Antibody at 1:2K dilution for 1 hour at room temperature.



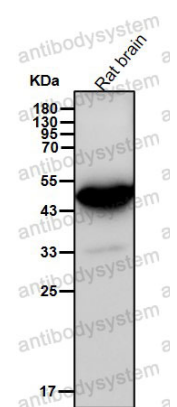
Western blot

All lanes use the Antibody at 1:2K dilution for 1 hour at room temperature.



Western blot

All lanes use the Antibody at 1:2K dilution for 1 hour at room temperature.



Western blot

All lanes use the Antibody at 1:2K dilution for 1 hour at room temperature.