

Anti-NDUFB1 Antibody (R1F32)

Summary

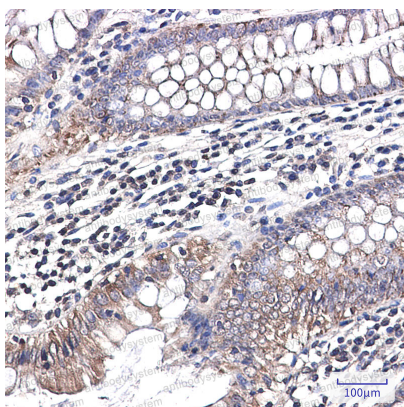
| | |
|----------------------------|---|
| Catalog No. | RHB20301 |
| Clone ID | R1F32 |
| Host species | Rabbit |
| Tested applications | IHC: 1:50-1:100, WB: 1:500-1:1000 |
| Species reactivity | Human |
| Form | Liquid |
| Storage buffer | 0.01M PBS, pH 7.4, 0.05% BSA, 50% Glycerol, 0.05% Sodium azide. |
| Concentration | 1 mg/ml |
| Purity | >95% by SDS-PAGE. |
| Clonality | Monoclonal |
| Isotype | IgG |
| Applications | IHC, WB |
| Target | NADH dehydrogenase [ubiquinone] 1 beta subcomplex subunit 1, NDUFB1, NADH-ubiquinone oxidoreductase MNLL subunit, CI-MNLL, Complex I-MNLL |
| Purification | Protein A/G purified from cell culture supernatant. |
| Endotoxin level | Please contact with the lab for this information. |
| Accession | O75438 |

Stability and Storage

Use a manual defrost freezer and avoid repeated freeze thaw cycles. Store at 4 °C for frequent use. Store at -20 °C for twelve months from the date of receipt.

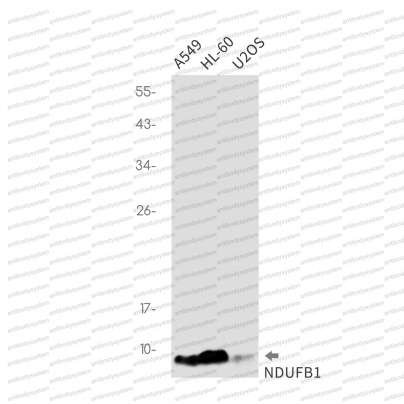
Note

For research use only.

Data Image

Immunohistochemical

Immunohistochemistry analysis of paraffin-embedded Human colon cancer using NDUFB1 antibody. High-pressure and temperature Sodium Citrate pH 6.0 was used for antigen retrieval.



Western blot

Western blot analysis of NDUFB1 in A549, HL-60, U2OS lysates using NDUFB1 antibody.