

# Anti-ULK1 Antibody (R1F26)

## Summary

---

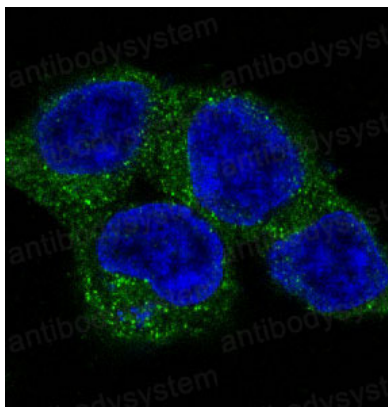
<b>Catalog No.</b>	RHB18102
<b>Clone ID</b>	R1F26
<b>Host species</b>	Rabbit
<b>Tested applications</b>	IF: 1:50-1:200, IHC: 1:100-1:200, WB: 1:1000-1:2000
<b>Species reactivity</b>	Human, Mouse, Rat
<b>Form</b>	Liquid
<b>Storage buffer</b>	0.01M PBS, pH 7.4, 0.05% BSA, 50% Glycerol, 0.05% Sodium azide.
<b>Concentration</b>	1 mg/ml
<b>Purity</b>	>95% by SDS-PAGE.
<b>Clonality</b>	Monoclonal
<b>Isotype</b>	IgG
<b>Applications</b>	IF, IHC, WB
<b>Target</b>	ULK1, Autophagy-related protein 1 homolog, Unc-51-like kinase 1, KIAA0722, Serine/threonine-protein kinase ULK1, hATG1, ATG1
<b>Purification</b>	Protein A/G purified from cell culture supernatant.
<b>Endotoxin level</b>	Please contact with the lab for this information.
<b>Accession</b>	O75385
<b>Stability and Storage</b>	Use a manual defrost freezer and avoid repeated freeze thaw cycles. Store at 4 °C for frequent use. Store at -20 °C for twelve months from the date of receipt.

**Note**

For research use only.

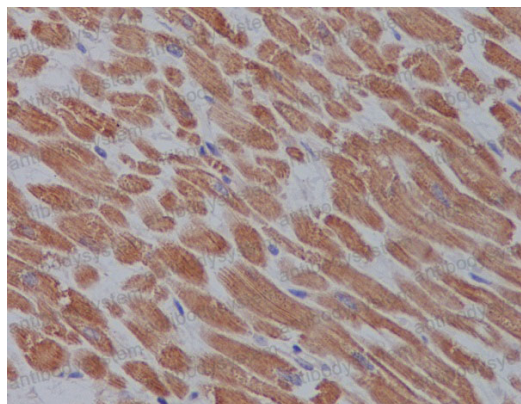
**Data Image**

---



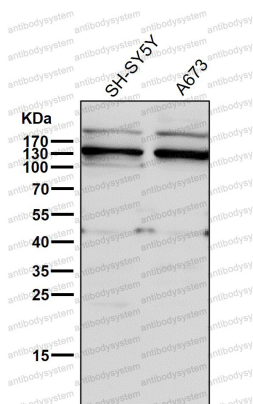
Immunofluorescence

Immunofluorescent analysis of 293 cells, using ULK1 Antibody .



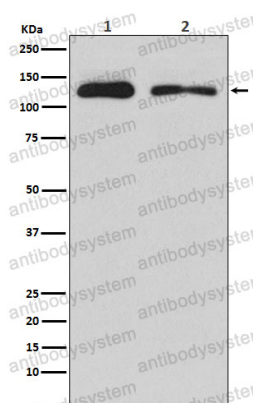
Immunohistochemical

Immunohistochemical analysis of paraffin-embedded human heart, using ULK1 Antibody.



Western blot

All lanes use the Antibody at 1:2K dilution for 1 hour at room temperature.



Western blot

Western blot analysis of ULK1 expression in (1) HEK293 cell lysate; (2) PC12 cell lysate.