

Anti-NDUFS6 Antibody (R1F25)

Summary

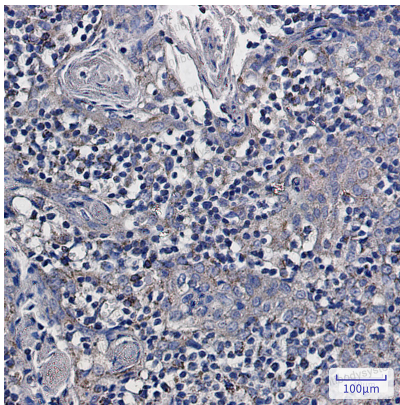
| | |
|----------------------------|--|
| Catalog No. | RHB17802 |
| Clone ID | R1F25 |
| Host species | Rabbit |
| Tested applications | IHC: 1:50-1:100, WB: 1:500-1:1000 |
| Species reactivity | Human, Mouse |
| Form | Liquid |
| Storage buffer | 0.01M PBS, pH 7.4, 0.05% BSA, 50% Glycerol, 0.05% Sodium azide. |
| Concentration | 1 mg/ml |
| Purity | >95% by SDS-PAGE. |
| Clonality | Monoclonal |
| Isotype | IgG |
| Applications | IHC, WB |
| Target | CI-13kD-A, NDUFS6, NADH dehydrogenase [ubiquinone] iron-sulfur protein 6, mitochondrial, NADH-ubiquinone oxidoreductase 13 kDa-A subunit, Complex I-13kD-A |
| Purification | Protein A/G purified from cell culture supernatant. |
| Endotoxin level | Please contact with the lab for this information. |
| Accession | O75380 |

Stability and Storage

Use a manual defrost freezer and avoid repeated freeze thaw cycles. Store at 4 °C for frequent use. Store at -20 °C for twelve months from the date of receipt.

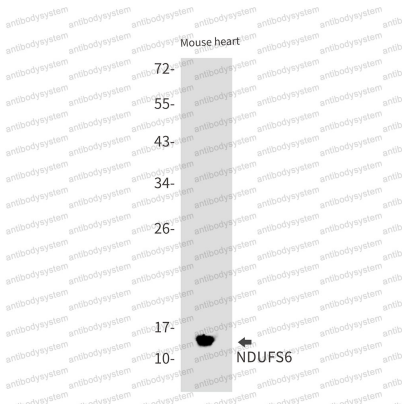
Note

For research use only.

Data Image

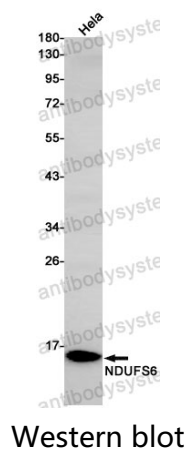
Immunohistochemical

Immunohistochemistry analysis of paraffin-embedded Human tonsil using NDUF6 antibody. High-pressure and temperature Sodium Citrate pH 6.0 was used for antigen retrieval.



Western blot

Western blot analysis of NDUF6 in mouse heart lysates using NDUF6 antibody.



Western blot analysis of NDUF56 in HeLa lysates using NDUF56 antibody.