

Anti-FKBP6 Antibody (R1F16)

Summary

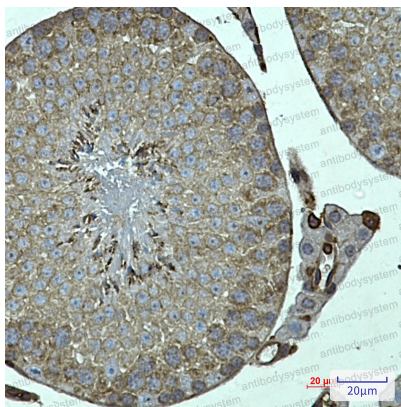
Catalog No.	RHB15701
Clone ID	R1F16
Host species	Rabbit
Tested applications	IHC: 1:50-1:100, WB: 1:500-1:1000
Species reactivity	Human, Mouse, Rat
Form	Liquid
Storage buffer	0.01M PBS, pH 7.4, 0.05% BSA, 50% Glycerol, 0.05% Sodium azide.
Concentration	1 mg/ml
Purity	>95% by SDS-PAGE.
Clonality	Monoclonal
Isotype	IgG
Applications	IHC, WB
Target	Immunophilin FKBP36, 36 kDa FK506-binding protein, 36 kDa FKBP, FK506-binding protein 6, Inactive PPIase FKBP6, FKBP6, FKBP-6, FKBP36, Inactive peptidyl-prolyl cis-trans isomerase FKBP6, FKBP-36
Purification	Protein A/G purified from cell culture supernatant.
Endotoxin level	Please contact with the lab for this information.
Accession	O75344

Stability and Storage

Use a manual defrost freezer and avoid repeated freeze thaw cycles. Store at 4 °C for frequent use. Store at -20 °C for twelve months from the date of receipt.

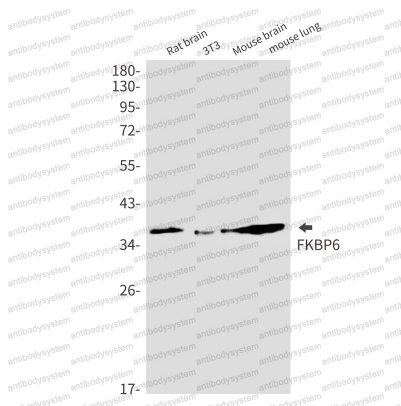
Note

For research use only.

Data Image

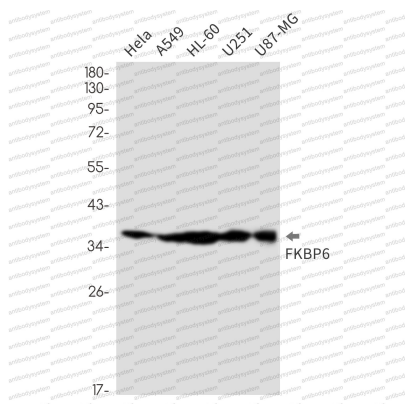
Immunohistochemical

Immunohistochemistry analysis of paraffin-embedded mouse testis using FKBP6 antibody. High-pressure and temperature Sodium Citrate pH 6.0 was used for antigen retrieval.



Western blot

Western blot analysis of FKBP6 in rat brain, 3T3, mouse brain, mouse lung lysates using FKBP6 antibody.



Western blot

Western blot analysis of FKBP6 in Hela, A549, HL-60, U251, U87-MG lysates using FKBP6 antibody