

Anti-KDM4A Antibody (R1F09)

Summary

Catalog No.	RHB11505
Clone ID	R1F09
Host species	Rabbit
Tested applications	IP: 1:20, WB: 1:500-1:1000
Species reactivity	Human
Form	Liquid
Storage buffer	0.01M PBS, pH 7.4, 0.05% BSA, 50% Glycerol, 0.05% Sodium azide.
Concentration	1 mg/ml
Purity	>95% by SDS-PAGE.
Clonality	Monoclonal
Isotype	IgG
Applications	IP, WB
Target	Lysine-specific demethylase 4A, JMJD2, Jumonji domain-containing protein 2A, KDM4A, KIAA0677, JHDM3A, [histone H3]-trimethyl-L-lysine(9) demethylase 4A, [histone H3]-trimethyl-L-lysine(36) demethylase 4A, JMJD2A, JmjC domain-containing histone demethylation protein 3A
Purification	Protein A/G purified from cell culture supernatant.
Endotoxin level	Please contact with the lab for this information.
Accession	O75164

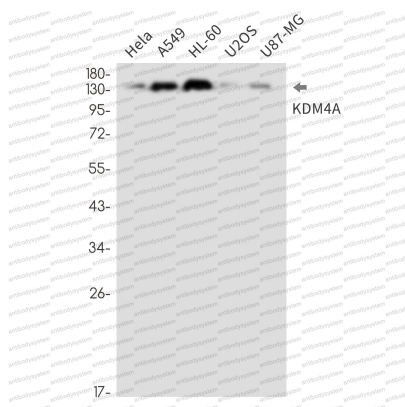
Stability and Storage

Use a manual defrost freezer and avoid repeated freeze thaw cycles. Store at 4 °C for frequent use. Store at -20 °C for twelve months from the date of receipt.

Note

For research use only.

Data Image



Western blot

Western blot analysis of KDM4A in HeLa, A549, HL-60, U2OS, U87-MG lysates using KDM4A antibody.