

# Anti-SH2D1A Antibody (R1E90)

## Summary

---

<b>Catalog No.</b>	RHB02901
<b>Clone ID</b>	R1E90
<b>Host species</b>	Rabbit
<b>Tested applications</b>	WB: 1:500-1:1000
<b>Species reactivity</b>	Human, Mouse, Rat
<b>Form</b>	Liquid
<b>Storage buffer</b>	0.01M PBS, pH 7.4, 0.05% BSA, 50% Glycerol, 0.05% Sodium azide.
<b>Concentration</b>	1 mg/ml
<b>Purity</b>	>95% by SDS-PAGE.
<b>Clonality</b>	Monoclonal
<b>Isotype</b>	IgG
<b>Applications</b>	WB
<b>Target</b>	Duncan disease SH2-protein, SH2D1A, Signaling lymphocytic activation molecule-associated protein, T-cell signal transduction molecule SAP, DSHP, SLAM-associated protein, SAP, SH2 domain-containing protein 1A
<b>Purification</b>	Protein A/G purified from cell culture supernatant.
<b>Endotoxin level</b>	Please contact with the lab for this information.
<b>Accession</b>	O60880

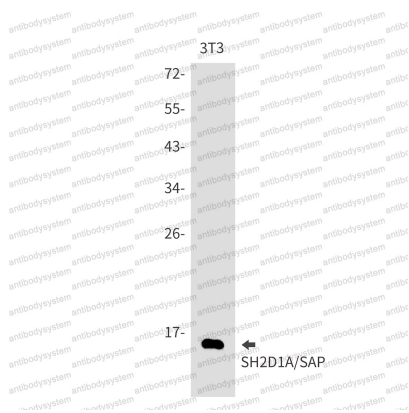
## Stability and Storage

Use a manual defrost freezer and avoid repeated freeze thaw cycles. Store at 4 °C for frequent use. Store at -20 °C for twelve months from the date of receipt.

## Note

For research use only.

## Data Image



Western blot



Western blot

Western blot analysis of SH2D1A/SAP in 3T3 lysates using SH2D1A antibody.

Western blot analysis of SH2D1A/SAP in MCF-7, C6 lysates using SH2D1A/SAP antibody.