

Anti-DKC1 Antibody (R1E89)

Summary

Catalog No.	RHB02001
Clone ID	R1E89
Host species	Rabbit
Tested applications	IF: 1:50-1:200, IHC: 1:50-1:100, WB: 1:500-1:1000
Species reactivity	Human, Mouse, Rat
Form	Liquid
Storage buffer	0.01M PBS, pH 7.4, 0.05% BSA, 50% Glycerol, 0.05% Sodium azide.
Concentration	1 mg/ml
Purity	>95% by SDS-PAGE.
Clonality	Monoclonal
Isotype	IgG
Applications	IF, IHC, WB
Target	CBF5 homolog, Nucleolar protein NAP57, NOLA4, H/ACA ribonucleoprotein complex subunit DKC1, snoRNP protein DKC1, Nucleolar protein family A member 4, Nopp140-associated protein of 57 kDa, Dyskerin, DKC1
Purification	Protein A/G purified from cell culture supernatant.
Endotoxin level	Please contact with the lab for this information.
Accession	O60832

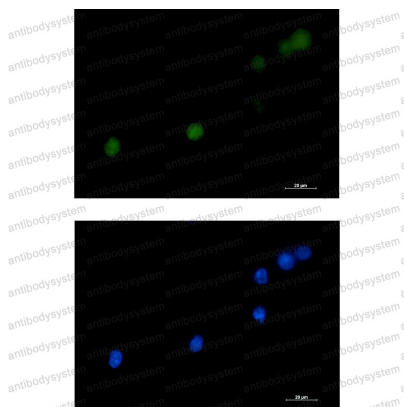
Stability and Storage

Use a manual defrost freezer and avoid repeated freeze thaw cycles. Store at 4 °C for frequent use. Store at -20 °C for twelve months from the date of receipt.

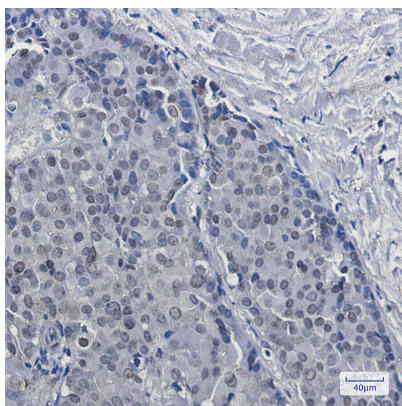
Note

For research use only.

Data Image



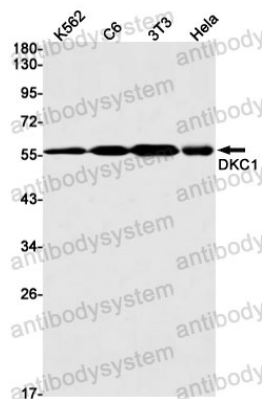
Immunofluorescence



Immunohistochemical

Immunocytochemistry analysis of DKC1 (green) in K562 using DKC1 antibody, and DAPI (blue).

Immunohistochemistry analysis of paraffin-embedded Human breast cancer tissue using DKC1 antibody. High-pressure and temperature Sodium Citrate pH 6.0 was used for antigen retrieval.



Western blot

Western blot analysis of DKC1 in K562, C6, 3T3, HeLa lysates using DKC1 antibody.