

Anti-DKC1 Antibody (R1E88)

Summary

Catalog No.	RHB02002
Clone ID	R1E88
Host species	Rabbit
Tested applications	IF: 1:50-1:200, IHC: 1:100-1:200, WB: 1:1000-1:2000
Species reactivity	Human, Mouse, Rat
Form	Liquid
Storage buffer	0.01M PBS, pH 7.4, 0.05% BSA, 50% Glycerol, 0.05% Sodium azide.
Concentration	1 mg/ml
Purity	>95% by SDS-PAGE.
Clonality	Monoclonal
Isotype	IgG
Applications	IF, IHC, WB
Target	CBF5 homolog, Nucleolar protein NAP57, NOLA4, H/ACA ribonucleoprotein complex subunit DKC1, snoRNP protein DKC1, Nucleolar protein family A member 4, Nopp140-associated protein of 57 kDa, Dyskerin, DKC1
Purification	Protein A/G purified from cell culture supernatant.
Endotoxin level	Please contact with the lab for this information.
Accession	O60832

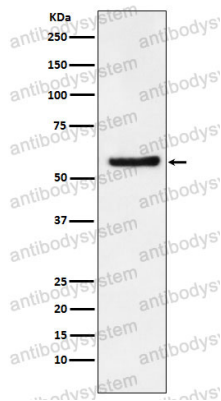
Stability and Storage

Use a manual defrost freezer and avoid repeated freeze thaw cycles. Store at 4 °C for frequent use. Store at -20 °C for twelve months from the date of receipt.

Note

For research use only.

Data Image



Western blot

Western blot analysis of DKC1 expression in SW480 cell lysate.