

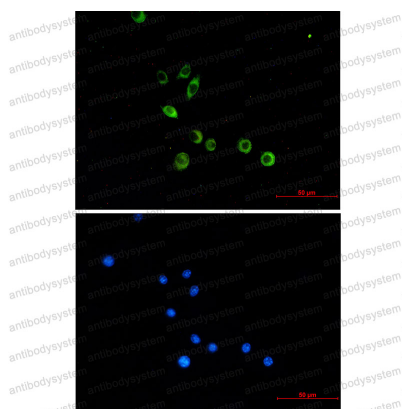
Anti-CD282/TLR2 Antibody (R1E72)

Summary

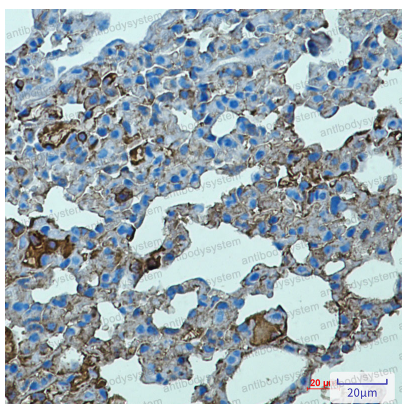
Catalog No.	RMA95502
Clone ID	R1E72
Host species	Rabbit
Tested applications	IF: 1:50-1:200, IHC: 1:50-1:100, WB: 1:500-1:1000
Species reactivity	Mouse
Form	Liquid
Storage buffer	0.01M PBS, pH 7.4, 0.05% BSA, 50% Glycerol, 0.05% Sodium azide.
Concentration	1 mg/ml
Purity	>95% by SDS-PAGE.
Clonality	Monoclonal
Isotype	IgG
Applications	IF, IHC, WB
Target	TIL4, Toll-like receptor 2, TLR2, Toll/interleukin-1 receptor-like protein 4, CD282
Purification	Protein A/G purified from cell culture supernatant.
Endotoxin level	Please contact with the lab for this information.
Accession	Q9QUN7
Stability and Storage	Use a manual defrost freezer and avoid repeated freeze thaw cycles. Store at 4 °C for frequent use. Store at -20 °C for twelve months from the date of receipt.

Note

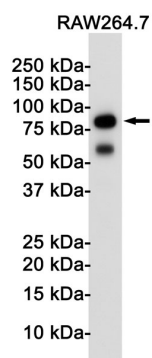
For research use only.

Data Image**Immunofluorescence**

Immunocytochemistry analysis of TLR2 (green) in Raw264.7 using TLR2 antibody, and DAPI(blue)

**Immunohistochemical**

Immunohistochemistry analysis of paraffin-embedded mouse lung using Toll Like Receptor 2 antibody. High-pressure and temperature Sodium Citrate pH 6.0 was used for antigen retrieval.



Western blot analysis of TLR2 in Raw264.7 lysates using TLR2 antibody.

Western blot