

Anti-BUB1B Antibody (R1E69)

Summary

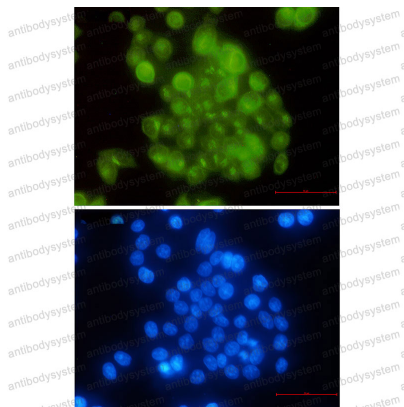
Catalog No.	RHA94903
Clone ID	R1E69
Host species	Rabbit
Tested applications	IF: 1:50-1:200, IP: 1:20, WB: 1:500-1:1000
Species reactivity	Human
Form	Liquid
Storage buffer	0.01M PBS, pH 7.4, 0.05% BSA, 50% Glycerol, 0.05% Sodium azide.
Concentration	1 mg/ml
Purity	>95% by SDS-PAGE.
Clonality	Monoclonal
Isotype	IgG
Applications	IF, IP, WB
Target	SSK1, MAD3/BUB1-related protein kinase, BUB1B, Mitotic checkpoint serine/threonine-protein kinase BUB1 beta, BUBR1, MAD3L, Protein SSK1, hBUBR1, Mitotic checkpoint kinase MAD3L
Purification	Protein A/G purified from cell culture supernatant.
Endotoxin level	Please contact with the lab for this information.
Accession	O60566

Stability and Storage

Use a manual defrost freezer and avoid repeated freeze thaw cycles. Store at 4 °C for frequent use. Store at -20 °C for twelve months from the date of receipt.

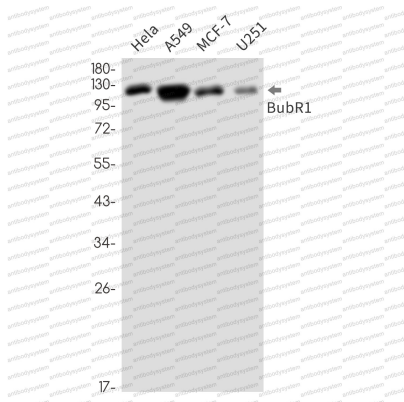
Note

For research use only.

Data Image

Immunofluorescence

Immunocytochemistry analysis of BubR1 (green) in hela using BubR1 antibody, and DAPI(blue)



Western blot

Western blot analysis of BubR1 in HeLa, A549, MCF-7, U251 lysates using BUBR1 antibody.