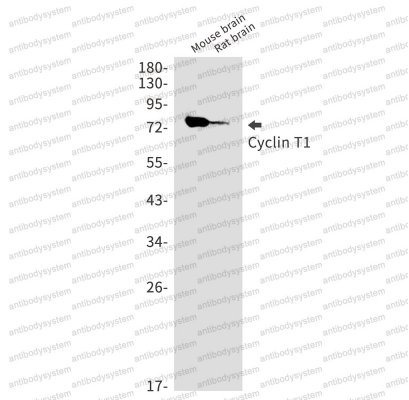


Anti-CCNT1 Antibody (R1E67)

Summary

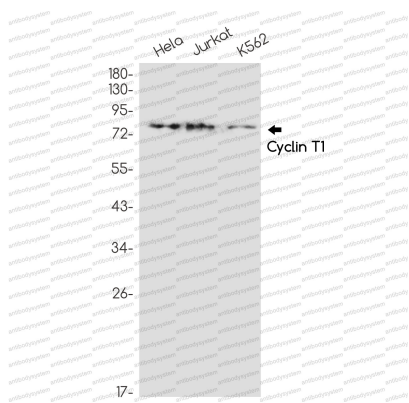
Catalog No.	RHA94701
Clone ID	R1E67
Host species	Rabbit
Tested applications	IF: 1:50-1:200, IHC: 1:50-1:100, IP: 1:20, WB: 1:500-1:1000
Species reactivity	Human, Mouse, Rat
Form	Liquid
Storage buffer	0.01M PBS, pH 7.4, 0.05% BSA, 50% Glycerol, 0.05% Sodium azide.
Concentration	1 mg/ml
Purity	>95% by SDS-PAGE.
Clonality	Monoclonal
Isotype	IgG
Applications	IF, IHC, IP, WB
Target	CycT1, CCNT1, Cyclin-T1, Cyclin-T
Purification	Protein A/G purified from cell culture supernatant.
Endotoxin level	Please contact with the lab for this information.
Accession	O60563
Stability and Storage	Use a manual defrost freezer and avoid repeated freeze thaw cycles. Store at 4 °C for frequent use. Store at -20 °C for twelve months from the date of receipt.
Note	For research use only.

Data Image



Western blot

Western blot analysis of Cyclin T1 in mouse brain, rat brain lysates using Cyclin T1 antibody.



Western blot

Western blot analysis of Cyclin T1 in HeLa, Jurkat, K562 lysates using Cyclin T1 antibody.