

Anti-GSDME Antibody (R1E57)

Summary

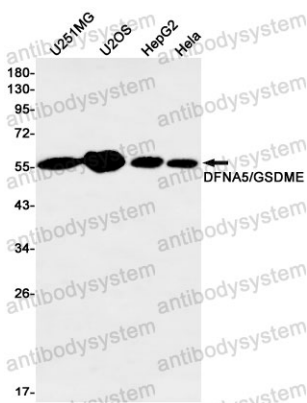
Catalog No.	RHA91101
Clone ID	R1E57
Host species	Rabbit
Tested applications	IP: 1:20, WB: 1:500-1:1000
Species reactivity	Human
Form	Liquid
Storage buffer	0.01M PBS, pH 7.4, 0.05% BSA, 50% Glycerol, 0.05% Sodium azide.
Concentration	1 mg/ml
Purity	>95% by SDS-PAGE.
Clonality	Monoclonal
Isotype	IgG
Applications	IP, WB
Target	ICERE-1, ICERE1, GSDME-CT, GSDME-NT, DFNA5, Inversely correlated with estrogen receptor expression 1, Gasdermin-E, GSDME, Non-syndromic hearing impairment protein 5
Purification	Protein A/G purified from cell culture supernatant.
Endotoxin level	Please contact with the lab for this information.
Accession	O60443

Stability and Storage

Use a manual defrost freezer and avoid repeated freeze thaw cycles. Store at 4 °C for frequent use. Store at -20 °C for twelve months from the date of receipt.

Note

For research use only.

Data Image

Western blot

Western blot analysis of DFNA5/GSDME in U251MG, U2OS, HepG2, HeLa lysates using GSDME antibody.