

# Anti-KDM1A Antibody (R1E53)

## Summary

---

<b>Catalog No.</b>	RHA88901
<b>Clone ID</b>	R1E53
<b>Host species</b>	Rabbit
<b>Tested applications</b>	IF: 1:50-1:200, IP: 1:20, WB: 1:500-1:1000
<b>Species reactivity</b>	Human, Rat, Hamster
<b>Form</b>	Liquid
<b>Storage buffer</b>	0.01M PBS, pH 7.4, 0.05% BSA, 50% Glycerol, 0.05% Sodium azide.
<b>Concentration</b>	1 mg/ml
<b>Purity</b>	>95% by SDS-PAGE.
<b>Clonality</b>	Monoclonal
<b>Isotype</b>	IgG
<b>Applications</b>	IF, IP, WB
<b>Target</b>	Lysine-specific histone demethylase 1A, KDM1, [histone H3]-dimethyl-L-lysine(4) FAD-dependent demethylase 1A, Flavin-containing amine oxidase domain-containing protein 2, KIAA0601, BRAF35-HDAC complex protein BHC110, KDM1A, AOF2, LSD1
<b>Purification</b>	Protein A/G purified from cell culture supernatant.
<b>Endotoxin level</b>	Please contact with the lab for this information.
<b>Accession</b>	O60341

## Recombinant Proteins &amp; Antibodies

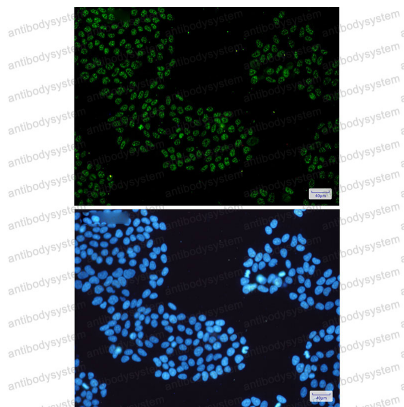
## Stability and Storage

Use a manual defrost freezer and avoid repeated freeze thaw cycles. Store at 4 °C for frequent use. Store at -20 °C for twelve months from the date of receipt.

## Note

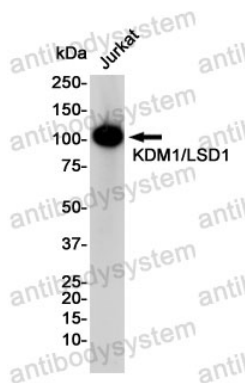
For research use only.

## Data Image



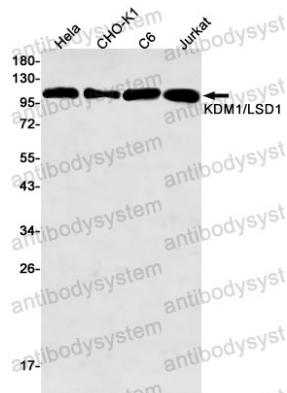
Immunofluorescence

Immunocytochemistry analysis of KDM4B/JMJD2B(green) in Hela using KDM4B/JMJD2B antibody, and DAPI(blue)



Western blot

Western blot analysis of KDM1/LSD1 in Jurkat lysates using KDM1A antibody.



Western blot

Western blot analysis of KDM1/LSD1 in HeLa, CHO-K1, C6, Jurkat lysates using KDM1/LSD1 antibody.