

# Anti-PIP5K1C Antibody (R1E52)

## Summary

---

<b>Catalog No.</b>	RMA88501
<b>Clone ID</b>	R1E52
<b>Host species</b>	Rabbit
<b>Tested applications</b>	IP: 1:20, WB: 1:500-1:1000
<b>Species reactivity</b>	Human, Mouse
<b>Form</b>	Liquid
<b>Storage buffer</b>	0.01M PBS, pH 7.4, 0.05% BSA, 50% Glycerol, 0.05% Sodium azide.
<b>Concentration</b>	1 mg/ml
<b>Purity</b>	>95% by SDS-PAGE.
<b>Clonality</b>	Monoclonal
<b>Isotype</b>	IgG
<b>Applications</b>	IP, WB
<b>Target</b>	PIP5K1gamma, Type I phosphatidylinositol 4-phosphate 5-kinase gamma, KIAA0589, PIP5K1C, Phosphatidylinositol 4-phosphate 5-kinase type-1 gamma, PtdIns(4)P-5-kinase 1 gamma
<b>Purification</b>	Protein A/G purified from cell culture supernatant.
<b>Endotoxin level</b>	Please contact with the lab for this information.
<b>Accession</b>	O70161

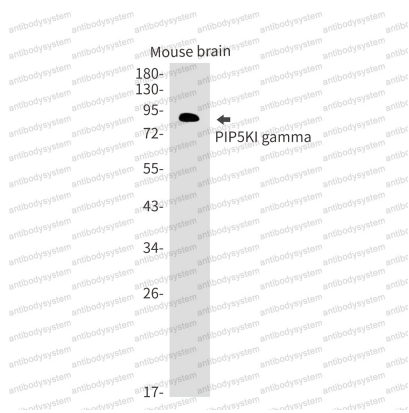
## Recombinant Proteins &amp; Antibodies

**Stability and Storage**

Use a manual defrost freezer and avoid repeated freeze thaw cycles. Store at 4 °C for frequent use. Store at -20 °C for twelve months from the date of receipt.

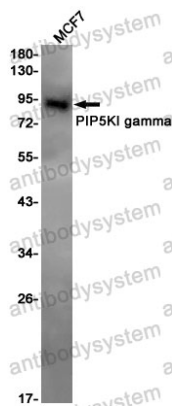
**Note**

For research use only.

**Data Image**

Western blot

Western blot analysis of PIP5KI gamma in mouse brain lysates using PIP5K1C antibody.



Western blot

Western blot analysis of PIP5KI gamma in MCF-7 lysates using PIP5KI gamma antibody.