

# Anti-SMARCA5 Antibody (R1E50)

## Summary

---

|                            |  |
|----------------------------|--|
| <b>Catalog No.</b>         | RHA85501   |
| <b>Clone ID</b>            | R1E50  |
| <b>Host species</b>        | Rabbit   |
| <b>Tested applications</b> | IF: 1:50-1:200, WB: 1:500-1:1000   |
| <b>Species reactivity</b>  | Human, Mouse, Rat  |
| <b>Form</b>                | Liquid   |
| <b>Storage buffer</b>      | 0.01M PBS, pH 7.4, 0.05% BSA, 50% Glycerol, 0.05% Sodium azide.  |
| <b>Concentration</b>       | 1 mg/ml  |
| <b>Purity</b>              | >95% by SDS-PAGE.  |
| <b>Clonality</b>           | Monoclonal   |
| <b>Isotype</b>             | IgG  |
| <b>Applications</b>        | IF, WB   |
| <b>Target</b>              | Sucrose nonfermenting protein 2 homolog, SWI/SNF-related matrix-associated actin-dependent regulator of chromatin A5, SNF2H, hSNF2H, SMARCA5, SWI/SNF-related matrix-associated actin-dependent regulator of chromatin subfamily A member 5, WCRF135 |
| <b>Purification</b>        | Protein A/G purified from cell culture supernatant.  |
| <b>Endotoxin level</b>     | Please contact with the lab for this information.  |
| <b>Accession</b>           | O60264   |

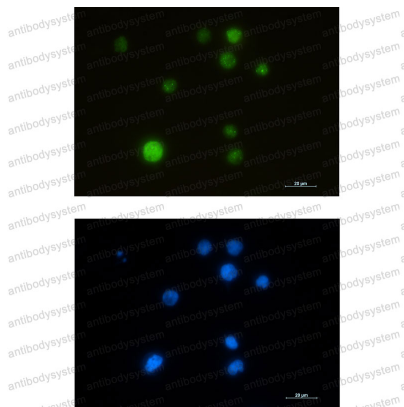
## Stability and Storage

Use a manual defrost freezer and avoid repeated freeze thaw cycles. Store at 4 °C for frequent use. Store at -20 °C for twelve months from the date of receipt.

## Note

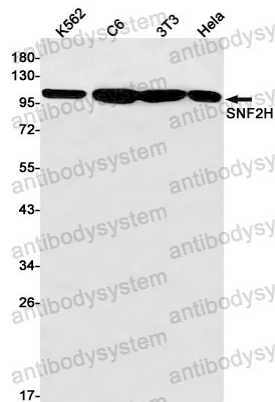
For research use only.

## Data Image



Immunofluorescence

Immunocytochemistry analysis of SMARCA5 (green) in Jurkat using SMARCA5 antibody, and DAPI (blue).



Western blot

Western blot analysis of SNF2H in K562, C6, 3T3, Hela lysates using SNF2H antibody.