

# Anti-SMARCA5 Antibody (R1E49)

## Summary

---

<b>Catalog No.</b>	RHA85502
<b>Clone ID</b>	R1E49
<b>Host species</b>	Rabbit
<b>Tested applications</b>	IF: 1:50-1:200, WB: 1:1000-1:2000
<b>Species reactivity</b>	Human, Mouse, Rat
<b>Form</b>	Liquid
<b>Storage buffer</b>	0.01M PBS, pH 7.4, 0.05% BSA, 50% Glycerol, 0.05% Sodium azide.
<b>Concentration</b>	1 mg/ml
<b>Purity</b>	>95% by SDS-PAGE.
<b>Clonality</b>	Monoclonal
<b>Isotype</b>	IgG
<b>Applications</b>	IF, WB
<b>Target</b>	Sucrose nonfermenting protein 2 homolog, SWI/SNF-related matrix-associated actin-dependent regulator of chromatin A5, SNF2H, hSNF2H, SMARCA5, SWI/SNF-related matrix-associated actin-dependent regulator of chromatin subfamily A member 5, WCRF135
<b>Purification</b>	Protein A/G purified from cell culture supernatant.
<b>Endotoxin level</b>	Please contact with the lab for this information.
<b>Accession</b>	O60264

**Stability and Storage**

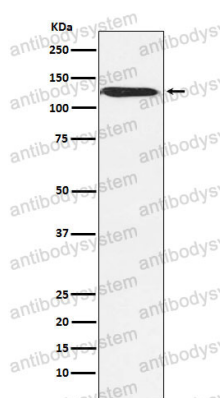
Use a manual defrost freezer and avoid repeated freeze thaw cycles. Store at 4 °C for frequent use. Store at -20 °C for twelve months from the date of receipt.

**Note**

For research use only.

**Data Image**

---



Western blot

Western blot analysis of SNF2H expression in MCF7 cell lysate.