

Anti-KLK8 Antibody (R1E48)

Summary

Catalog No.	RHA85201
Clone ID	R1E48
Host species	Rabbit
Tested applications	IHC: 1:100-1:200, WB: 1:1000-1:2000
Species reactivity	Human
Form	Liquid
Storage buffer	0.01M PBS, pH 7.4, 0.05% BSA, 50% Glycerol, 0.05% Sodium azide.
Concentration	1 mg/ml
Purity	>95% by SDS-PAGE.
Clonality	Monoclonal
Isotype	IgG
Applications	IHC, WB
Target	Serine protease 19, TADG14, Tumor-associated differentially expressed gene 14 protein, Serine protease TADG-14, NP, NRPN, KLK8, Neuropsin, Kallikrein-8, hK8, PRSS19, Ovasin
Purification	Protein A/G purified from cell culture supernatant.
Endotoxin level	Please contact with the lab for this information.
Accession	O60259

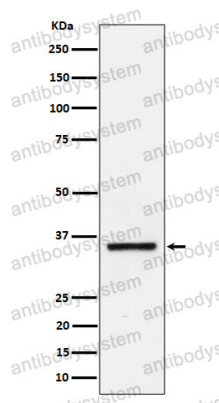
Stability and Storage

Use a manual defrost freezer and avoid repeated freeze thaw cycles. Store at 4 °C for frequent use. Store at -20 °C for twelve months from the date of receipt.

Note

For research use only.

Data Image



Western blot

Western blot analysis of Kallikrein 8 expression in Jurkat cell lysate.