

Anti-VEGFD Antibody (R1E44)

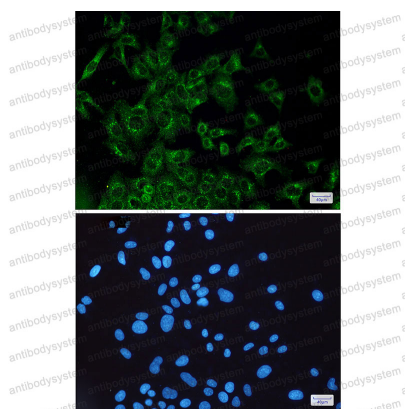
Summary

Catalog No.	RHA81901
Clone ID	R1E44
Host species	Rabbit
Tested applications	IF: 1:50-1:200, IHC: 1:50-1:100, WB: 1:500-1:1000
Species reactivity	Human, Mouse, Rat
Form	Liquid
Storage buffer	0.01M PBS, pH 7.4, 0.05% BSA, 50% Glycerol, 0.05% Sodium azide.
Concentration	1 mg/ml
Purity	>95% by SDS-PAGE.
Clonality	Monoclonal
Isotype	IgG
Applications	IF, IHC, WB
Target	Vascular endothelial growth factor D, VEGF-D, FIGF, VEGFD, c-Fos-induced growth factor
Purification	Protein A/G purified from cell culture supernatant.
Endotoxin level	Please contact with the lab for this information.
Accession	O43915
Stability and Storage	Use a manual defrost freezer and avoid repeated freeze thaw cycles. Store at 4 °C for frequent use. Store at -20 °C for twelve months from the date of receipt.

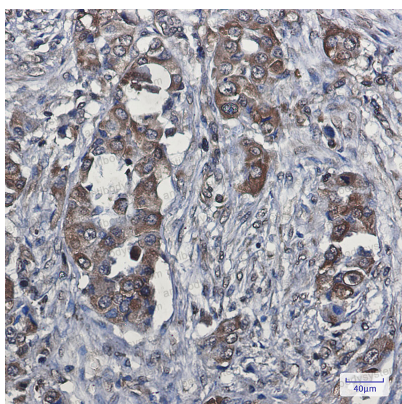
Note

For research use only.

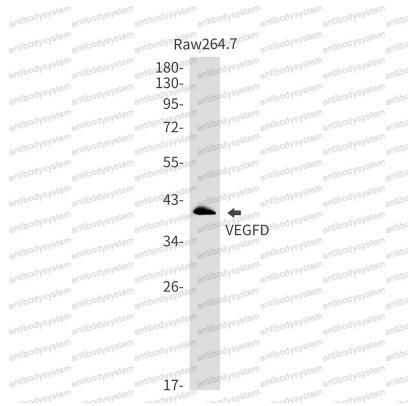
Data Image

**Immunofluorescence**

Immunocytochemistry analysis of VEGFD(green) in Hela using VEGFD antibody, and DAPI(blue)

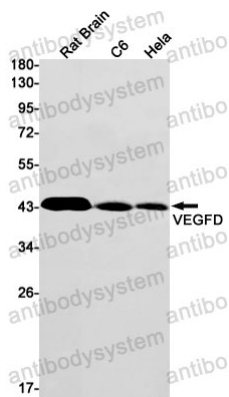
**Immunohistochemical**

Immunohistochemistry analysis of paraffin-embedded Human lung cancer using VEGFD antibody. High-pressure and temperature Sodium Citrate pH 6.0 was used for antigen retrieval.



Western blot

Western blot analysis of VEGFD in Raw264.7 lysates using VEGFD antibody.



Western blot

Western blot analysis of VEGFD in rat Brain, C6, HeLa lysates using VEGFD antibody.