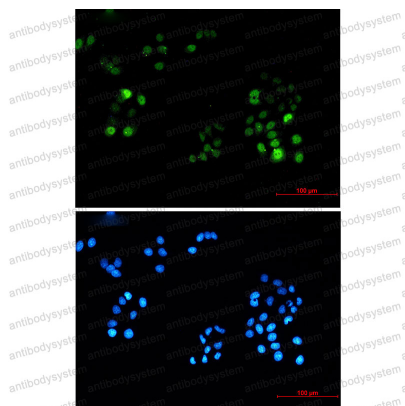


Anti-Phospho-PRC1 (Thr481) Antibody (R1E25)

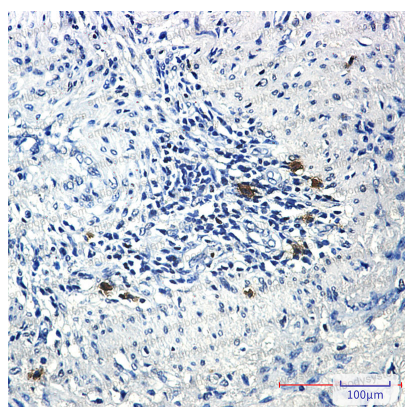
Summary

Catalog No.	RHA73802
Clone ID	R1E25
Host species	Rabbit
Tested applications	IF: 1:50-1:200, IHC: 1:50-1:100, WB: 1:500-1:1000
Species reactivity	Human
Form	Liquid
Storage buffer	0.01M PBS, pH 7.4, 0.05% BSA, 50% Glycerol, 0.05% Sodium azide.
Concentration	1 mg/ml
Purity	>95% by SDS-PAGE.
Clonality	Monoclonal
Isotype	IgG
Applications	IF, IHC, WB
Target	PRC1, Protein regulator of cytokinesis 1
Purification	Protein A/G purified from cell culture supernatant.
Endotoxin level	Please contact with the lab for this information.
Accession	O43663
Stability and Storage	Use a manual defrost freezer and avoid repeated freeze thaw cycles. Store at 4 °C for frequent use. Store at -20 °C for twelve months from the date of receipt.
Note	For research use only.

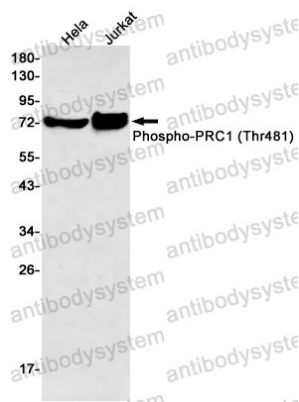
Data Image



Immunofluorescence



Immunohistochemical



Western blot

Immunocytochemistry analysis of Phospho-PRC1 (Thr481) (green) in HeLa using Phospho-PRC1 (Thr481) antibody, and DAPI (blue)

Immunohistochemistry analysis of paraffin-embedded Human lung cancer using PRC1 (Phospho-Thr481) antibody. High-pressure and temperature Sodium Citrate pH 6.0 was used for antigen retrieval.

Western blot analysis of Phospho-PRC1 (Thr481) in HeLa, Jurkat lysates using Phospho-PRC1 (Thr481) antibody.