

Anti-NCK2 Antibody (R1E24)

Summary

Catalog No.	RHA73401
Clone ID	R1E24
Host species	Rabbit
Tested applications	IF: 1:50-1:200, WB: 1:500-1:1000
Species reactivity	Human, Mouse, Rat
Form	Liquid
Storage buffer	0.01M PBS, pH 7.4, 0.05% BSA, 50% Glycerol, 0.05% Sodium azide.
Concentration	1 mg/ml
Purity	>95% by SDS-PAGE.
Clonality	Monoclonal
Isotype	IgG
Applications	IF, WB
Target	Nck-2, Cytoplasmic protein NCK2, NCK adaptor protein 2, GRB4, Growth factor receptor-bound protein 4, SH2/SH3 adaptor protein NCK-beta, NCK2
Purification	Protein A/G purified from cell culture supernatant.
Endotoxin level	Please contact with the lab for this information.
Accession	O43639

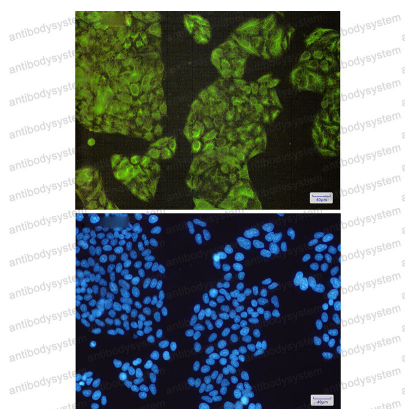
Stability and Storage

Use a manual defrost freezer and avoid repeated freeze thaw cycles. Store at 4 °C for frequent use. Store at -20 °C for twelve months from the date of receipt.

Note

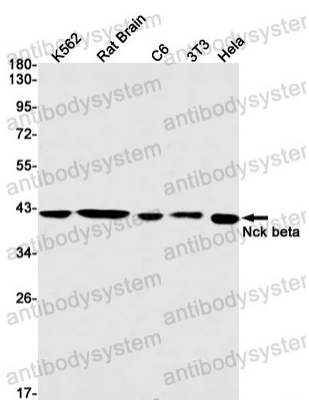
For research use only.

Data Image



Immunofluorescence

Immunocytochemistry analysis of Nck beta(green) in HeLa using Nck beta antibody, and DAPI(blue)



Western blot

Western blot analysis of Nck beta in K562, rat Brain, C6, 3T3, HeLa lysates using NCK2 antibody.