

Anti-DCX Antibody (R1E20)

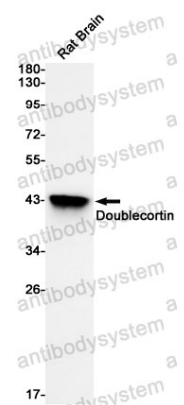
Summary

Catalog No.	RHA72205
Clone ID	R1E20
Host species	Rabbit
Tested applications	WB: 1:500-1:1000
Species reactivity	Rat
Form	Liquid
Storage buffer	0.01M PBS, pH 7.4, 0.05% BSA, 50% Glycerol, 0.05% Sodium azide.
Concentration	1 mg/ml
Purity	>95% by SDS-PAGE.
Clonality	Monoclonal
Isotype	IgG
Applications	WB
Target	Lis-X, LISX, DCX, Neuronal migration protein doublecortin, Doublin, Lissencephalin-X, DBCN
Purification	Protein A/G purified from cell culture supernatant.
Endotoxin level	Please contact with the lab for this information.
Accession	O43602
Stability and Storage	Use a manual defrost freezer and avoid repeated freeze thaw cycles. Store at 4 °C for frequent use. Store at -20 °C for twelve months from the date of receipt.

Note

For research use only.

Data Image



Western blot

Western blot analysis of Doublecortin in rat Brain lysates using Doublecortin antibody.