

Anti-FOXO3 Antibody (R1E11)

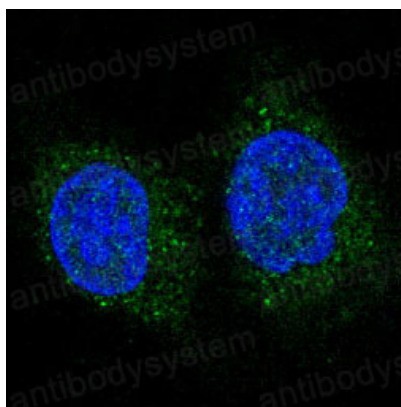
Summary

Catalog No.	RHA69803
Clone ID	R1E11
Host species	Rabbit
Tested applications	IF: 1:50-1:200, WB: 1:1000-1:2000
Species reactivity	Human, Mouse, Rat
Form	Liquid
Storage buffer	0.01M PBS, pH 7.4, 0.05% BSA, 50% Glycerol, 0.05% Sodium azide.
Concentration	1 mg/ml
Purity	>95% by SDS-PAGE.
Clonality	Monoclonal
Isotype	IgG
Applications	IF, WB
Target	Forkhead in rhabdomyosarcoma-like 1, AF6q21 protein, Forkhead box protein O3, FOXO3, FKHRL1, FOXO3A
Purification	Protein A/G purified from cell culture supernatant.
Endotoxin level	Please contact with the lab for this information.
Accession	O43524
Stability and Storage	Use a manual defrost freezer and avoid repeated freeze thaw cycles. Store at 4 °C for frequent use. Store at -20 °C for twelve months from the date of receipt.

Note

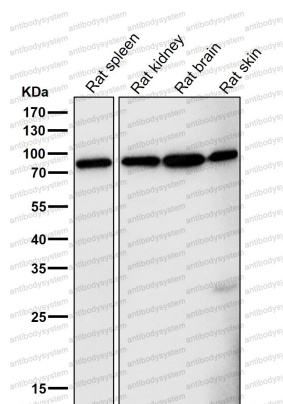
For research use only.

Data Image



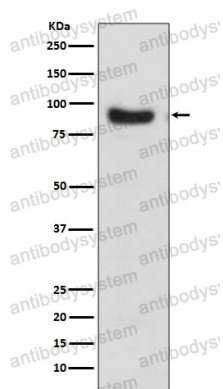
Immunofluorescent analysis of Hela cells, using FoxO3a Antibody.

Immunofluorescence



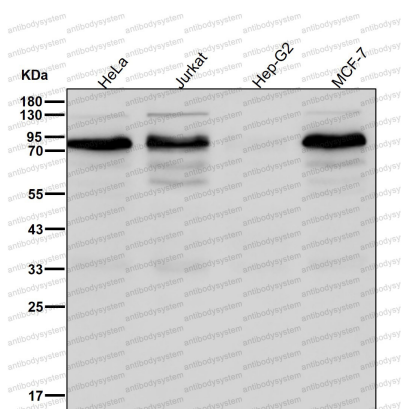
All lanes use the Antibody at 1:1K dilution for 1 hour at room temperature.

Western blot



Western blot

Western blot analysis of FOXO3A expression in MCF-7 cell lysate.



Western blot

All lanes use the Antibody at 1:1K dilution for 1 hour at room temperature.