

Anti-HTRA2 Antibody (R1E07)

Summary

Catalog No.	RHA68003
Clone ID	R1E07
Host species	Rabbit
Tested applications	IF: 1:50-1:200, IHC: 1:50-1:100, IP: 1:20, WB: 1:500-1:1000
Species reactivity	Human, Mouse
Form	Liquid
Storage buffer	0.01M PBS, pH 7.4, 0.05% BSA, 50% Glycerol, 0.05% Sodium azide.
Concentration	1 mg/ml
Purity	>95% by SDS-PAGE.
Clonality	Monoclonal
Isotype	IgG
Applications	IF, IHC, IP, WB
Target	High temperature requirement protein A2, OMI, HtrA2, PRSS25, Serine protease 25, Serine proteinase OMI, Serine protease HTRA2, mitochondrial, HTRA2, Omi stress-regulated endoprotease
Purification	Protein A/G purified from cell culture supernatant.
Endotoxin level	Please contact with the lab for this information.
Accession	O43464

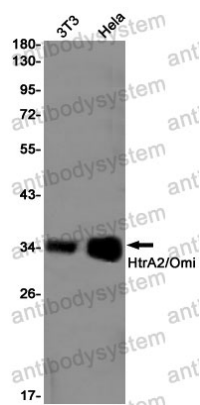
Stability and Storage

Use a manual defrost freezer and avoid repeated freeze thaw cycles. Store at 4 °C for frequent use. Store at -20 °C for twelve months from the date of receipt.

Note

For research use only.

Data Image



Western blot

Western blot analysis of HtrA2/Omi in 3T3, HeLa lysates using HtrA2 antibody.