

Anti-RIPK2 Antibody (R1E05)

Summary

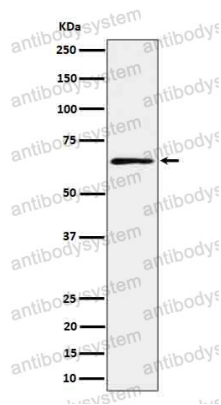
Catalog No.	RHA65401
Clone ID	R1E05
Host species	Rabbit
Tested applications	WB: 1:1000-1:2000
Species reactivity	Human, Mouse, Rat
Form	Liquid
Storage buffer	0.01M PBS, pH 7.4, 0.05% BSA, 50% Glycerol, 0.05% Sodium azide.
Concentration	1 mg/ml
Purity	>95% by SDS-PAGE.
Clonality	Monoclonal
Isotype	IgG
Applications	WB
Target	Tyrosine-protein kinase RIPK2, CARDIAK, CARD-containing interleukin-1 beta-converting enzyme-associated kinase, RICK, RIPK2, CARD-containing IL-1 beta ICE-kinase, Receptor-interacting serine/threonine-protein kinase 2, RIP-like-interacting CLARP kinase, RIP2, Receptor-interacting protein 2, RIP-2
Purification	Protein A/G purified from cell culture supernatant.
Endotoxin level	Please contact with the lab for this information.
Accession	O43353

Stability and Storage

Use a manual defrost freezer and avoid repeated freeze thaw cycles. Store at 4 °C for frequent use. Store at -20 °C for twelve months from the date of receipt.

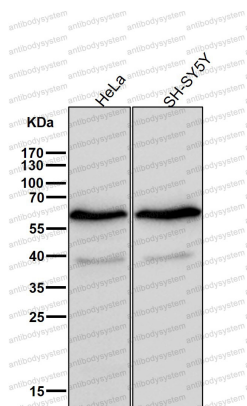
Note

For research use only.

Data Image

Western blot

Western blot analysis of RIP2 in K562 cell lysate.



Western blot

All lanes use the Antibody at 1:2K dilution for 1 hour at room temperature.