

# Anti-PRPF4 Antibody (R1D94)

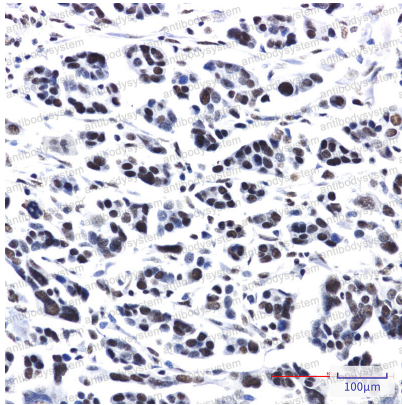
## Summary

---

<b>Catalog No.</b>	RHA59304
<b>Clone ID</b>	R1D94
<b>Host species</b>	Rabbit
<b>Tested applications</b>	IHC: 1:50-1:100, WB: 1:500-1:1000
<b>Species reactivity</b>	Human, Mouse, Rat
<b>Form</b>	Liquid
<b>Storage buffer</b>	0.01M PBS, pH 7.4, 0.05% BSA, 50% Glycerol, 0.05% Sodium azide.
<b>Concentration</b>	1 mg/ml
<b>Purity</b>	>95% by SDS-PAGE.
<b>Clonality</b>	Monoclonal
<b>Isotype</b>	IgG
<b>Applications</b>	IHC, WB
<b>Target</b>	U4/U6 snRNP 60 kDa protein, hPrp4, PRP4, WD splicing factor Prp4, PRP4 homolog, PRPF4, U4/U6 small nuclear ribonucleoprotein Prp4
<b>Purification</b>	Protein A/G purified from cell culture supernatant.
<b>Endotoxin level</b>	Please contact with the lab for this information.
<b>Accession</b>	O43172
<b>Stability and Storage</b>	Use a manual defrost freezer and avoid repeated freeze thaw cycles. Store at 4 °C for frequent use. Store at -20 °C for twelve months from the date of receipt.

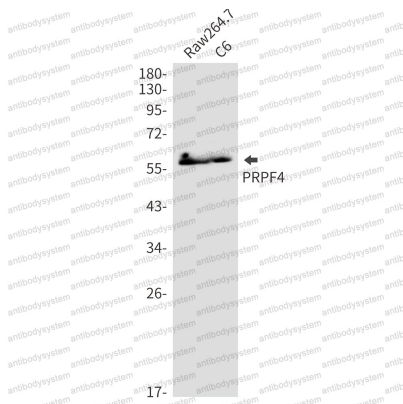
**Note** For research use only.

## Data Image



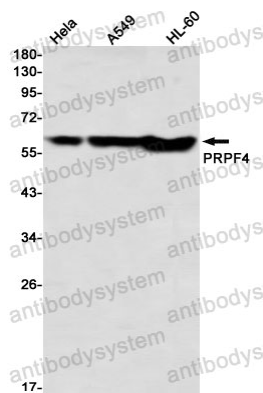
Immunohistochemical

Immunohistochemistry analysis of paraffin-embedded Human Cholangiocarcinoma using PRPF4 antibody. High-pressure and temperature Sodium Citrate pH 6.0 was used for antigen retrieval.



Western blot

Western blot analysis of PRPF4 in Raw264.7, C6 lysates using PRPF4 antibody.



Western blot

Western blot analysis of PRPF4 in HeLa, A549, HL-60 lysates using PRPF4 antibody.