

Anti-CLDN3/Claudin-3 Antibody (R1D90)

Summary

Catalog No.	RHA57402
Clone ID	R1D90
Host species	Rabbit
Tested applications	IF: 1:50-1:200, IP: 1:20, WB: 1:500-1:1000
Species reactivity	Human
Form	Liquid
Storage buffer	0.01M PBS, pH 7.4, 0.05% BSA, 50% Glycerol, 0.05% Sodium azide.
Concentration	1 mg/ml
Purity	>95% by SDS-PAGE.
Clonality	Monoclonal
Isotype	IgG
Applications	IF, IP, WB
Target	Claudin-3, Rat ventral prostate.1 protein homolog, CPE-R 2, C7orf1, Clostridium perfringens enterotoxin receptor 2, CPE-receptor 2, CPETR2, hRVP1, CLDN3
Purification	Protein A/G purified from cell culture supernatant.
Endotoxin level	Please contact with the lab for this information.
Accession	O15551

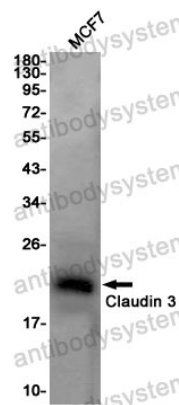
Stability and Storage

Use a manual defrost freezer and avoid repeated freeze thaw cycles. Store at 4 °C for frequent use. Store at -20 °C for twelve months from the date of receipt.

Note

For research use only.

Data Image



Western blot

Western blot analysis of Claudin 3 in MCF-7 lysates using Claudin 3 antibody.